

CK5P3 Polyclonal Antibody

catalog number: D-AB-10307L

Note: Centrifuge before opening to ensure complete recovery of vial contents.

Description

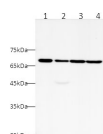
Reactivity	Human
Immunogen	Recombinant Human CK5P3 Protein expressed by E.coli
Host	Rabbit
Isotype	IgG
Purification	Antigen Affinity Purification
Conjugation	Unconjugated
buffer	PBS with 0.05% proclin 300, 1% protective protein and 50% glycerol,pH7.4

Applications

Recommended Dilution

WB	1:500-1:1000
IHC	1:100-1:400

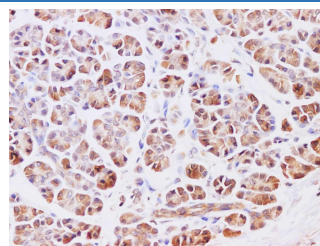
Data



Western blot with CK5P3 Polyclonal Antibody at dilution of 1:1000.lane 1:Jurkat whole cell lysate,lane 2:Hela whole cell lysate,lane 3:A431 whole cell lysate,lane 4:HEK-293T whole cell lysate

Observed-MV:57 kDa

Calculated-MV:57 kDa



Immunohistochemistry of paraffin-embedded Human pancreas using CK5P3 Polyclonal Antibody at dilution of 1:200

Preparation & Storage

Storage	Store at -20°C Valid for 12 months. Avoid freeze / thaw cycles.
Shipping	The product is shipped with ice pack,upon receipt,store it immediately at the temperature recommended.

Background

This gene encodes a protein that has been reported to function in signaling pathways governing transcriptional regulation and cell cycle progression. It may play a role in tumorigenesis and metastasis. A pseudogene of this gene is located on the long arm of chromosome 20. Alternative splicing results in multiple transcript variants that encode different isoforms.

For Research Use Only