

Recombinant MLH1 Monoclonal Antibody

catalog number: **E-AB-81583**

Note: Centrifuge before opening to ensure complete recovery of vial contents.

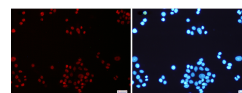
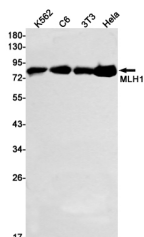
Description

Reactivity	Human;Mouse;Rat
Immunogen	A synthetic peptide of human MLH1
Host	Rabbit
Isotype	IgG
Clone	R02-2E8
Purification	Affinity Purified
Buffer	50mM Tris-Glycine(pH 7.4), 0.15M NaCl, 40% Glycerol, 0.05% stabilizer and 0.05% protective protein.

Applications

Applications	Recommended Dilution
WB	1:1000-1:2000
IF	1:50-1:100

Data



Western blot detection of MLH1 in K562,C6,3T3,HeLa cell lysates using MLH1 Rabbit mAb(1:1000 diluted).Predicted band size:85kDa.Observed band size:85kDa.

Immunofluorescence of MLH1(green) in HeLa cells using MLH1 Rabbit mAb at dilution 1:200, and DAPI(blue)

Observed-MV:85 kDa
Calculated-MV:85 kDa

Preparation & Storage

Storage	Store at -20°C Valid for 12 months. Avoid freeze / thaw cycles.
Shipping	The product is shipped with ice pack,upon receipt,store it immediately at the temperature recommended.

Background

This gene was identified as a locus frequently mutated in hereditary nonpolyposis colon cancer (HNPCC). It is a human homolog of the E. coli DNA mismatch repair gene mutL, consistent with the characteristic alterations in microsatellite sequences (RER+phenotype) found in HNPCC. Alternative splicing results in multiple transcript variants encoding distinct isoforms. Additional transcript variants have been described, but their full-length natures have not been determined.

For Research Use Only