

LINGO2 Polyclonal Antibody

Catalog Number:E-AB-91018



Note: Centrifuge before opening to ensure complete recovery of vial contents.

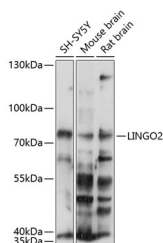
Description

Reactivity	Human,Mouse,Rat
Immunogen	Recombinant fusion protein of human LINGO2
Host	Rabbit
Isotype	IgG
Purification	Affinity purification
Conjugation	Unconjugated
Formulation	PBS with 0.01% thiomersal,50% glycerol,pH7.3.

Applications Recommended Dilution

WB	1:500-1:2000
-----------	--------------

Data



Western blot analysis of extracts of various cell lines using LINGO2 Polyclonal Antibody at 1:1000 dilution.

Observed MW:72kDa

Calculated Mw:68kDa

Preparation & Storage

Storage Store at -20°C. Avoid freeze/thaw cycles.

Background

Predicted to act upstream of or within positive regulation of synapse assembly. Predicted to be integral component of membrane. Predicted to be active in extracellular matrix and extracellular space.

For Research Use Only

A Reliable Research Partner in Life Science and Medicine

Toll-free: 1-888-852-8623

Web: www.elabscience.com

Tel: 1-832-243-6086

Email: techsupport@elabscience.com

Fax: 1-832-243-6017