

Recombinant Human PPP1R14A Protein (His Tag)

Catalog Number:PKSH032967



Note: Centrifuge before opening to ensure complete recovery of vial contents.

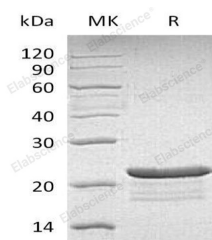
Description

Synonyms	Protein Phosphatase 1 Regulatory Subunit 14A;17 kDa PKC-Potentiated Inhibitory Protein of PP1;Protein Kinase C-Potentiated Inhibitor Protein of 17 kDa;CPI-17;PPP1R14A;CPI17;PPP1INL
Species	Human
Expression Host	E.coli
Sequence	Met 1-Pro147
Accession	Q96A00
Calculated Molecular Weight	17.8 kDa
Observed molecular weight	23-26 kDa
Tag	C-His

Properties

Purity	> 95 % as determined by reducing SDS-PAGE.
Endotoxin	< 1.0 EU per µg of the protein as determined by the LAL method.
Storage	Store at < -20°C, stable for 6 months. Please minimize freeze-thaw cycles.
Shipping	This product is provided as liquid. It is shipped at frozen temperature with blue ice/gel packs. Upon receipt, store it immediately at < - 20°C.
Formulation	Supplied as a 0.2 µm filtered solution of 20mM Tris-HCl, 0.2mM EDTA, 1mM DTT, 10% Glycerol, pH 8.0.
Reconstitution	Not Applicable

Data



> 95 % as determined by reducing SDS-PAGE.

Background

Protein Phosphatase 1 Regulatory Subunit 14A (PPP1R14A) belongs to the PP1 inhibitor family. PPP1R14A is mapped to chromosome 19q13.13-q13.2. PPP1R14A binds directly to protein kinase C and casein kinase I. Meantime; PPP1R14A is a phosphorylation-dependent inhibitor of smooth muscle myosin phosphatase. PPP1R14A is the inhibitor of PPP1CA. When phosphorylated; PPP1R14A has over 1000-fold higher inhibitory activity; creating a molecular switch for regulating the phosphorylation status of PPP1CA substrates and smooth muscle contraction. In addition; inhibition of PPP1R14A also enhances contraction of smooth muscle in the absence of increment of intracellular Ca²⁺ concentration.

For Research Use Only

A Reliable Research Partner in Life Science and Medicine

Toll-free: 1-888-852-8623

Web: www.elabscience.com

Tel: 1-832-243-6086

Email: techsupport@elabscience.com

Fax: 1-832-243-6017