

## PE/Cyanine7 Anti-Human CD23 Antibody[EBVCS2]

Catalog Number: E-AB-F1382H

Note: Centrifuge before opening to ensure complete recovery of vial contents.

### Description

<b>Reactivity</b>	Human
<b>Host</b>	Mouse
<b>Isotype</b>	Mouse IgG1, κ
<b>Clone No.</b>	EBVCS2
<b>Isotype Control</b>	PE/Cyanine7 Mouse IgG1, κ Isotype Control[MOPC-21] [Product E-AB-F09792H]
<b>Conjugation</b>	PE/Cyanine 7
<b>Conjugation Information</b>	PE/Cyanine7 is designed to be excited by the Blue (488 nm), Green (532 nm) and yellow-green (561 nm) lasers and detected using an optical filter centered near 775 nm (e.g., a 780/60 nm bandpass filter).
<b>Storage Buffer</b>	Phosphate buffered solution, pH 7.2, containing 0.09% sodium azide and 1% BSA.

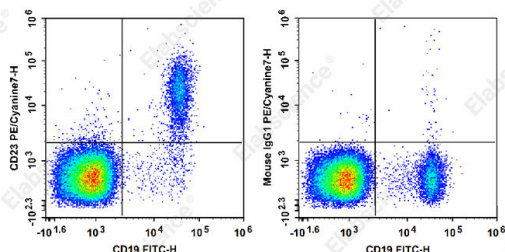
### Applications

### Recommended usage

FCM

Each lot of this antibody is quality control tested by flow cytometric analysis. **The amount of the reagent is suggested to be used 5 μL of antibody per test (million cells in 100 μL staining volume or per 100 μL of whole blood).** Please check your vial before the experiment. Since applications vary, the appropriate dilutions must be determined for individual use.

### Data



Staining of normal human peripheral blood cells with FITC Anti-Human CD19 Antibody[CB19] and PE/Cyanine7 Anti-Human CD23 Antibody[EBVCS2] (left) or PE/Cyanine7 Mouse IgG1, κ Isotype Control (right). Cells in the lymphocytes gate were used for analysis.

### Preparation & Storage

<b>Storage</b>	Keep as concentrated solution. This product can be stored at 2-8°C for 12 months. Please protected from prolonged exposure to light and do not freeze.
<b>Shipping</b>	Ice bag

### Antigen Information

<b>Alternate Names</b>	Leu-20;FcεRII;IgE Fc Receptor;BLAST-2;B6;Low affinity IgE receptor
<b>Uniprot ID</b>	P06734

### For Research Use Only

**Gene ID**

2208

**Background**

CD23 is a 45 kD protein, also known as Leu-20, FcεRII, IgE Fc receptor, BLAST-2, B6, and low affinity IgE receptor. It is a member of the Ig family, expressed on most mature B cells, B cells in follicular mantle (but not in proliferating germinal center cells, follicular dendritic cells, monocytes, eosinophils, Langerhans cells, and a subset of T cells (10-15% of tonsillar T cells). CD23 responds to high levels of IgE by downregulating IgE secretion. In human monocytes, CD23 triggering results in release of pro-inflammatory cytokines including TNF-α, IL-1, IL-6, and GM-CSF. CD23 can be proteolytically cleaved to generate soluble CD23 fragments of various molecular weights. In chronic lymphocytic leukemia, levels of soluble CD23 in the serum can be used as a prognostic marker to identify patients at high risk for disease progression. Alternate splicing of exon 2 can also generate two cell-surface isoforms of CD23 differing by 6 amino acids in their cytoplasmic region.