

Recombinant Caveolin 1 Monoclonal Antibody

catalog number: E-AB-81544

Note: Centrifuge before opening to ensure complete recovery of vial contents.

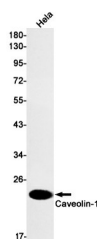
Description

| | |
|---------------------|---|
| Reactivity | Human |
| Immunogen | Recombinant protein of human Caveolin-1 |
| Host | Rabbit |
| Isotype | IgG |
| Clone | R05-6C3 |
| Purification | Affinity Purified |
| Buffer | 50mM Tris-Glycine(pH 7.4), 0.15M NaCl, 40% Glycerol, 0.05% stabilizer and 0.05% protective protein. |

Applications

| Applications | Recommended Dilution |
|--------------|----------------------|
| WB | 1:1000-1:2000 |
| IHC | 1:50-1:100 |
| IF | 1:20-1:100 |

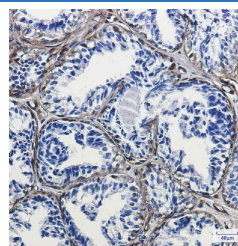
Data



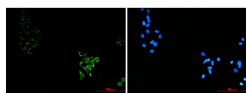
Western blot detection of Caveolin-1 in Hela cell lysates using Caveolin-1 Rabbit mAb(1:1000 diluted). Predicted band size: 20kDa. Observed band size: 20kDa.

Observed-MW: 20 kDa

Calculated-MW: 20 kDa



Immunohistochemistry of Caveolin-1 in paraffin-embedded Human breast cancer tissue using Caveolin-1 Rabbit mAb at dilution 1:100



Immunofluorescence of Caveolin-1 (green) in Hela using Caveolin-1 antibody at dilution 1:20, and DAPI(blue)

Preparation & Storage

| | |
|-----------------|--|
| Storage | Store at -20°C Valid for 12 months. Avoid freeze / thaw cycles. |
| Shipping | The product is shipped with ice pack, upon receipt, store it immediately at the temperature recommended. |

Background

For Research Use Only

Caveolin-1 (CAV1), a multifunctional protein, is the main constituent molecule of caveolae and represents a scaffolding molecule for several signaling molecules including epidermal growth factor receptor. Several studies have implicated that a reduced expression of CAV1 was found in cancers including head and neck carcinoma. However, other studies recognize CAV1 as a tumor promoter because CAV1 is overexpressed in various kinds of cancers, especially in oral cancer. Recent study also shows that CAV1 is involved in gastric cancer.

For Research Use Only

Toll-free: 1-888-852-8623
Web: www.elabscience.com

Tel: 1-832-243-6086
Email: techsupport@elabscience.com

Fax: 1-832-243-6017

Rev. V1.7