

GTF2F2 Polyclonal Antibody

catalog number: E-AB-64677

Note: Centrifuge before opening to ensure complete recovery of vial contents.

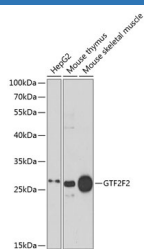
Description

Reactivity	Human;Mouse
Immunogen	Recombinant fusion protein of human GTF2F2 (NP_004119.1).
Host	Rabbit
Isotype	IgG
Purification	Affinity purification
Buffer	Phosphate buffered solution, pH 7.4, containing 0.05% stabilizer and 50% glycerol.

Applications

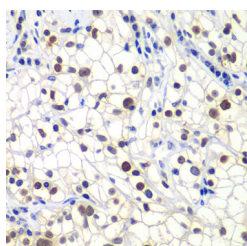
Applications	Recommended Dilution
WB	1:500-1:2000
IHC	1:50-1:200
IF	1:50-1:200

Data

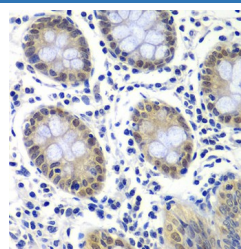


Western blot analysis of extracts of various cell lines using GTF2F2 Polyclonal Antibody at dilution of 1:1000.

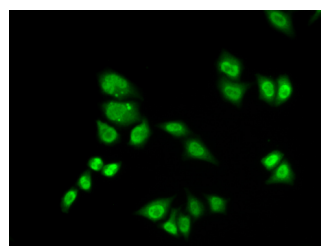
Observed-MV:28 kDa
Calculated-MV:28 kDa



Immunohistochemistry of paraffin-embedded Human kidney cancer using GTF2F2 Polyclonal Antibody at dilution of 1:200 (40x lens).



Immunohistochemistry of paraffin-embedded Human colon using GTF2F2 Polyclonal Antibody at dilution of 1:200 (40x lens).



Immunofluorescence analysis of A549 cells using GTF2F2 Polyclonal Antibody

Preparation & Storage

Storage	Store at -20°C Valid for 12 months. Avoid freeze / thaw cycles.
Shipping	The product is shipped with ice pack, upon receipt, store it immediately at the temperature recommended.

Background

For Research Use Only

GTF2F2 (General Transcription Factor IIF Subunit 2) is a Protein Coding gene. Among its related pathways are RNA Polymerase II Transcription Initiation And Promoter Clearance and Signaling by FGFR2 in disease. Gene Ontology (GO) annotations related to this gene include helicase activity and ATP-dependent helicase activity.

For Research Use Only

Toll-free: 1-888-852-8623
Web: www.elabscience.com

Tel: 1-832-243-6086
Email: techsupport@elabscience.com

Fax: 1-832-243-6017

Rev. V1.6