

FITC Anti-Rat CD161 Antibody[3.2.3]

Catalog Number: E-AB-F1307C

Note: Centrifuge before opening to ensure complete recovery of vial contents.

Description

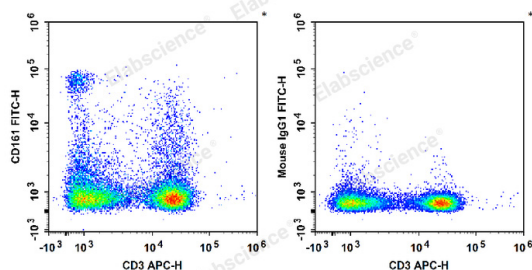
Reactivity	Rat
Host	Mouse
Isotype	Mouse IgG1, κ
Clone No.	3.2.3
Isotype Control	FITC Mouse IgG1, κ Isotype Control[MOPC-21] [Product E-AB-F09792C]
Conjugation	FITC
Conjugation Information	FITC is designed to be excited by the Blue laser (488 nm) and detected using an optical filter centered near 530 nm (e.g., a 525/40 nm bandpass filter).
Storage Buffer	Phosphate buffered solution, pH 7.2, containing 0.09% sodium azide and 1% BSA.

Applications

Recommended usage

FCM	Each lot of this antibody is quality control tested by flow cytometric analysis. The amount of the reagent is suggested to be used 5 μL of antibody per test (million cells in 100 μL staining volume or per 100 μL of whole blood). Please check your vial before the experiment. Since applications vary, the appropriate dilutions must be determined for individual use.
-----	---

Data



Rat splenocytes are stained with APC Anti-Rat CD3 Antibody and FITC Anti-Rat CD161 Antibody (Left). Splenocytes are stained with APC Anti-Rat CD3 Antibody and FITC Mouse IgG1, κ Isotype Control (Right).

Preparation & Storage

Storage	Keep as concentrated solution. This product can be stored at 2-8°C for 12 months. Please protected from prolonged exposure to light and do not freeze.
Shipping	Ice bag

Antigen Information

Alternate Names	CD161a/CD161bNKR-P1a/KLRB1a;NKR-P1
Uniprot ID	P27471;A4KWA1;Q5NKN4;Q5NKN2
Gene ID	362443

For Research Use Only

Background

CD161 is a 30 kD type II transmembrane C-type lectin, expressed as a homodimer. Rat NKR-P1 receptors are primarily expressed on NK cells, a subset of T cells, dendritic cells, and activated monocytes. There are three different types of NKR-P in rat, namely NKR-P1a, NKR-P1b, and NKR-P1c. NKR-P1a does not contain an ITIM structure and is an activating receptor, while NKR-P1b contains an ITIM and displays inhibitory function. LLT-1 (ligand lectin like transcript 1) is the ligand, while KLR (killer cell lectin like) functions as a receptor.