

## Recombinant Human EphA4 Protein

**Catalog Number:** PKSH032008

**Note:** *Centrifuge before opening to ensure complete recovery of vial contents.*

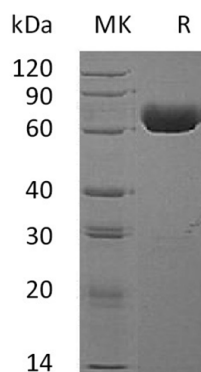
### Description

<b>Species</b>	Human
<b>Source</b>	HEK293 Cells-derived Human EphA4 protein Val20-Thr547
<b>Calculated MW</b>	59.2 kDa
<b>Observed MW</b>	60-80 kDa
<b>Accession</b>	P54764
<b>Bio-activity</b>	Not validated for activity

### Properties

<b>Purity</b>	> 95 % as determined by reducing SDS-PAGE.
<b>Endotoxin</b>	< 1.0 EU per µg of the protein as determined by the LAL method.
<b>Storage</b>	Generally, lyophilized proteins are stable for up to 12 months when stored at -20 to -80°C. Reconstituted protein solution can be stored at 4-8°C for 2-7 days. Aliquots of reconstituted samples are stable at < -20°C for 3 months.
<b>Shipping</b>	This product is provided as lyophilized powder which is shipped with ice packs.
<b>Formulation</b>	Lyophilized from a 0.2 µm filtered solution of PBS, pH 7.4. Normally 5% - 8% trehalose, mannitol and 0.01% Tween 80 are added as protectants before lyophilization.
<b>Reconstitution</b>	Please refer to the specific buffer information in the printed manual. Please refer to the printed manual for detailed information.

### Data



> 95 % as determined by reducing SDS-PAGE.

### Background

Ephrin type-A receptor 4 (EPHA4) belongs to the protein kinase superfamily and Ephrin receptor subfamily. EPHA4 contains 1 Eph LBD domain; 2 fibronectin type-III domains; 1 protein kinase domain and 1 SAM domain. EPH and EPH-related receptors have been implicated in mediating developmental events; particularly in the nervous system. Receptors in the EPH subfamily typically have a single kinase domain and an extracellular region containing a Cys-rich domain and 2 fibronectin type III repeats. The ephrin receptors are divided into 2 groups based on the similarity of their extracellular domain sequences and their affinities for binding ephrin-A and ephrin-B ligands.

### For Research Use Only

Toll-free: 1-888-852-8623  
Web: [www.elabscience.com](http://www.elabscience.com)

Tel: 1-832-243-6086  
Email: [techsupport@elabscience.com](mailto:techsupport@elabscience.com)

Fax: 1-832-243-6017