

# GS Polyclonal Antibody

catalog number: E-AB-40658

**Note:** Centrifuge before opening to ensure complete recovery of vial contents.

## Description

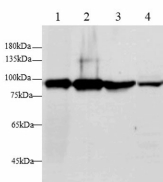
|                     |  |
|---------------------|--|
| <b>Reactivity</b>   | Human  |
| <b>Immunogen</b>    | Recombinant Human GS protein expressed by E.coli                         |
| <b>Host</b>         | Rabbit   |
| <b>Isotype</b>      | IgG  |
| <b>Purification</b> | Antigen Affinity Purification  |
| <b>Conjugation</b>  | Unconjugated   |
| <b>buffer</b>       | PBS with 0.05% proclin 300, 1% protective protein and 50% glycerol,pH7.4 |

## Applications

## Recommended Dilution

|           |             |
|-----------|-------------|
| <b>WB</b> | 1:250-1:500 |
|-----------|-------------|

## Data



Western blot with GS Polyclonal antibody at dilution of 1:500.lane 1:Human Plasma, lane 2:THP-1 whole cell lysate, lane 3:MCF-7 whole cell lysate,lane 4:A431 whole cell lysate

**Observed-MV:81/86 kDa**

**Calculated-MV:86 kDa**

## Preparation & Storage

|                 |  |
|-----------------|--|
| <b>Storage</b>  | Store at -20°C Valid for 12 months. Avoid freeze / thaw cycles.  |
| <b>Shipping</b> | The product is shipped with ice pack,upon receipt,store it immediately at the temperature recommended. |

## Background

Calcium-regulated, actin-modulating protein that binds to the plus (or barbed) ends of actin monomers or filaments, preventing monomer exchange (end-blocking or capping). It can promote the assembly of monomers into filaments ( nucleation) as well as sever filaments already formed. Plays a role in ciliogenesis.

## For Research Use Only