

PRSS50 Polyclonal Antibody

Catalog Number: E-AB-16953



Note: Centrifuge before opening to ensure complete recovery of vial contents.

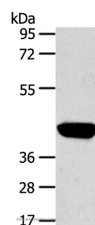
Description

Reactivity	Human
Immunogen	Synthetic peptide of human PRSS50
Host	Rabbit
Isotype	IgG
Purification	Affinity purification
Conjugation	Unconjugated
Formulation	PBS with 0.05% sodium azide and 50% glycerol, PH7.4

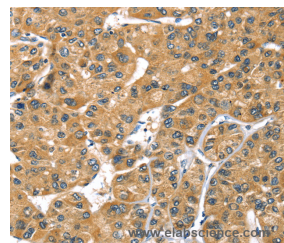
Applications Recommended Dilution

WB	1:500-1:2000
IHC	1:25-1:100

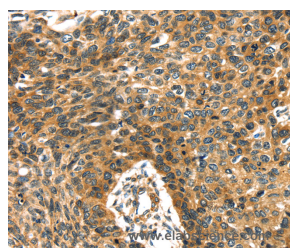
Data



Western Blot analysis of Hepg2 cell using PRSS50 Polyclonal Antibody at dilution of 1:450
Calculated Mw:43kDa



Immunohistochemistry of paraffin-embedded Human liver cancer using PRSS50 Polyclonal Antibody at dilution of 1:30



Immunohistochemistry of paraffin-embedded Human esophagus cancer using PRSS50 Polyclonal Antibody at dilution of 1:30

Preparation & Storage

Storage Store at -20°C. Avoid freeze / thaw cycles.

Background

May be involved in proteolysis through its threonine endopeptidase activity. Testis specific. Differentially expressed in some breast cancer tissues.

For Research Use Only

A Reliable Research Partner in Life Science and Medicine

Toll-free: 1-888-852-8623

Web: www.elabscience.com

Tel: 1-832-243-6086

Email: techsupport@elabscience.com

Fax: 1-832-243-6017