

# Amphiregulin Polyclonal Antibody

catalog number: AN005810L

**Note:** Centrifuge before opening to ensure complete recovery of vial contents.

## Description

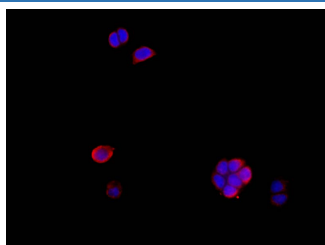
<b>Reactivity</b>	Human
<b>Immunogen</b>	Recombinant Human Amphiregulin protein expressed by E.coli
<b>Host</b>	Rabbit
<b>Isotype</b>	IgG
<b>Purification</b>	Antigen Affinity Purification
<b>Conjugation</b>	Unconjugated
<b>buffer</b>	PBS with 0.05% proclin 300, 1% protective protein and 50% glycerol,pH7.4

## Applications

## Recommended Dilution

IF	1:100-1:200
----	-------------

## Data



Immunofluorescence analysis of MCF-7 cells using Amphiregulin Polyclonal Antibody at dilution of 1:100.

## Preparation & Storage

<b>Storage</b>	Store at -20°C Valid for 12 months. Avoid freeze / thaw cycles.
<b>Shipping</b>	The product is shipped with ice pack, upon receipt, store it immediately at the temperature recommended.

## Background

The protein encoded by this gene is a member of the epidermal growth factor family. It is an autocrine growth factor as well as a mitogen for astrocytes, Schwann cells and fibroblasts. It is related to epidermal growth factor (EGF) and transforming growth factor alpha (TGF-alpha). The protein interacts with the EGF/TGF-alpha receptor to promote the growth of normal epithelial cells, and it inhibits the growth of certain aggressive carcinoma cell lines. It also functions in mammary gland, oocyte and bone tissue development. This gene is associated with a psoriasis-like skin phenotype, and is also associated with other pathological disorders, including various types of cancers and inflammatory conditions.

## For Research Use Only