

Recombinant Mouse FGA/Fibrinogen A protein (His tag)



Catalog Number: PDEM100087

Note: Centrifuge before opening to ensure complete recovery of vial contents.

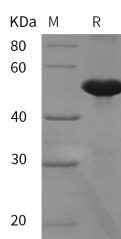
Description

Synonyms	FGA;Fib2;Fibrinogen A;Fibrinogen alpha chain;Fibrinogen Type I;fibrinogen;A alpha polypeptide;FPA
Species	Mouse
Expression Host	E.coli
Sequence	Asp 434-Gln 789
Accession	E9PV24
Calculated Molecular Weight	39.1 kDa
Observed molecular weight	50 kDa
Tag	N-His

Properties

Purity	> 95 % as determined by reducing SDS-PAGE.
Endotoxin	Please contact us for more information.
Storage	Generally, lyophilized proteins are stable for up to 12 months when stored at -20 to -80°C. Reconstituted protein solution can be stored at 4-8°C for 2-7 days. Aliquots of reconstituted samples are stable at < -20°C for 3 months.
Shipping	This product is provided as lyophilized powder which is shipped with ice packs.
Formulation	Lyophilized from sterile PBS, pH 7.4. Normally 5 % - 8 % trehalose, mannitol and 0.01 % Tween80 are added as protectants before lyophilization. Please refer to the specific buffer information in the printed manual.
Reconstitution	Please refer to the printed manual for detailed information.

Data



> 95 % as determined by reducing SDS-PAGE.

Background

Fibrinogen is a 340 kDa, secreted glycoprotein complex that is found in blood at concentrations of 150-400 mg/dL. It is secreted primarily by hepatocytes, but is also reported to be expressed by fibroblasts, type I alveolar epithelium, intestinal epithelium and some tumor cells. Fibrinogen is a homodimer that is composed of two, three-polypeptide chain subunits. Fibrinogen plays a central role in clot formation. Conversion of fibrinogen to fibrin is triggered by thrombin, which cleaves fibrinopeptides A and B from alpha and beta chains, and thus exposes the N-terminal polymerization sites responsible for the formation of the soft clot. The soft clot is converted into the hard clot by factor XIIIa which catalyzes the epsilon-(gamma-glutamyl)lysine cross-linking between gamma chains (stronger) and between alpha chains (weaker) of

For Research Use Only

A Reliable Research Partner in Life Science and Medicine

Toll-free: 1-888-852-8623

Web: www.elabscience.com

Tel: 1-832-243-6086

Email: techsupport@elabscience.com

Fax: 1-832-243-6017

Recombinant Mouse FGA/Fibrinogen A protein (His tag)



Catalog Number: PDEM100087

different monomers. Fibrinogen is also a component of the ECM and binds to cell surface molecules on inflammatory cells. Mature mouse alpha, beta and gamma -chains share 67%, 85% and 83% aa identity with human alpha, beta and gamma -chains, respectively.

For Research Use Only

A Reliable Research Partner in Life Science and Medicine

Toll-free: 1-888-852-8623

Tel: 1-832-243-6086

Fax: 1-832-243-6017

Web: www.elabscience.com

Email: techsupport@elabscience.com