

# Recombinant Human TIM1/HAVCR1 Protein (aa 1-135, His Tag)



Catalog Number: PKSH031288

**Note:** Centrifuge before opening to ensure complete recovery of vial contents.

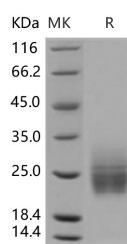
## Description

<b>Synonyms</b>	CD365;HACVR;HAVCR;HAVCR-1;KIM-1;KIM1;TIM;TIM-1;TIM1;TIMD-1;TIMD1
<b>Species</b>	Human
<b>Expression Host</b>	HEK293 Cells
<b>Sequence</b>	Met 1-Val 135
<b>Accession</b>	AAC39862.1
<b>Calculated Molecular Weight</b>	15.8 kDa
<b>Observed molecular weight</b>	22-26 kDa
<b>Tag</b>	C-His

## Properties

<b>Purity</b>	> 97 % as determined by reducing SDS-PAGE.
<b>Endotoxin</b>	< 1.0 EU per µg of the protein as determined by the LAL method.
<b>Storage</b>	Generally, lyophilized proteins are stable for up to 12 months when stored at -20 to -80°C. Reconstituted protein solution can be stored at 4-8°C for 2-7 days. Aliquots of reconstituted samples are stable at < -20°C for 3 months.
<b>Shipping</b>	This product is provided as lyophilized powder which is shipped with ice packs.
<b>Formulation</b>	Lyophilized from sterile PBS, pH 7.4 Normally 5 % - 8 % trehalose, mannitol and 0.01 % Tween80 are added as protectants before lyophilization. Please refer to the specific buffer information in the printed manual.
<b>Reconstitution</b>	Please refer to the printed manual for detailed information.

## Data



> 97 % as determined by reducing SDS-PAGE.

## Background

HAV cellular receptor 1 (HAVCR1), also known as Kidney injury molecule 1 (KIM-1) and T cell immunoglobulin mucin 1 (TIM-1), is a type I integral membrane glycoprotein. KIM-1 protein is widely expressed with highest levels in kidney and testis. It has been shown to play a major role as a human susceptibility gene for asthma, allergy and autoimmunity. IgA1 lambda is a specific ligand of KIM-1 protein and that their association has a synergistic effect in virus-receptor interactions. KIM-1 involves in the pathogenesis of acute kidney injury. It had been confirmed that KIM-1 is a human urinary renal dysfunction biomarker. Moreover, KIM-1 protein is a novel regulatory molecule of flow-induced calcium signaling.

## For Research Use Only

A Reliable Research Partner in Life Science and Medicine

Toll-free: 1-888-852-8623

Web: [www.elabscience.com](http://www.elabscience.com)

Tel: 1-832-243-6086

Email: [techsupport@elabscience.com](mailto:techsupport@elabscience.com)

Fax: 1-832-243-6017