

PerCP/Cyanine5.5 Anti-Mouse TCR β Antibody[H57-597]

Catalog Number: E-AB-F1123UJ

Note: Centrifuge before opening to ensure complete recovery of vial contents.

Description

Reactivity	Mouse
Host	Armenian Hamster
Isotype	Armenian Hamster IgG
Clone No.	H57-597
Isotype Control	PerCP/Cyanine5.5 Armenian Hamster IgG Isotype Control[PIP] [Product E-AB-F09853J]
Conjugation	PerCP/Cyanine 5.5
Conjugation Information	PerCP/Cyanine5.5 is designed to be excited by the blue laser (488 nm) and detected using an optical filter centered near 675 nm (e.g., a 690/50 nm bandpass filter).
Storage Buffer	Phosphate buffered solution, pH 7.2, containing 0.09% stabilizer and 1% protein protectant.

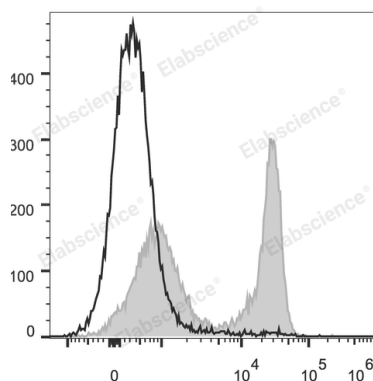
Applications

Recommended usage

FCM

Each lot of this antibody is quality control tested by flow cytometric analysis. Please check your vial before the experiment. Since applications vary, the appropriate dilutions must be determined for individual use. We suggest each investigator should titrate the reagent to obtain optimal results [The recommended concentration is 0.1-1 μ g/ 10^6 cells in 100 μ L volume].

Data



C57BL/6 murine splenocytes are stained with PerCP/Cyanine5.5 Anti-Mouse TCR β Antibody (filled gray histogram). Unstained splenocytes (empty black histogram) are used as control.

Preparation & Storage

Storage	Keep as concentrated solution. This product can be stored at 2-8°C for 12 months. Please protected from prolonged exposure to light and do not freeze.
Shipping	Ice bag

Antigen Information

Alternate Names	TCR- $\beta\beta$ -TCR;TCR- β chain
Gene ID	21577

For Research Use Only

Background

T cell receptor (TCR) is a heterodimer consisting of an α and a β chain (TCR α/β) or a γ and a δ chain (TCR γ/δ). TCR- β is a member of the immunoglobulin superfamily and a component of the CD3/TCR complex (along with TCR- α). It is expressed on α/β TCR-bearing T cells and thymocytes. The CD3/TCR complex plays a key role in antigen recognition, signal transduction, and T cell activation.

For Research Use Only