

## Recombinant Rat HER2/ErbB2 Protein

**Catalog Number:** PKSR030371

**Note:** *Centrifuge before opening to ensure complete recovery of vial contents.*

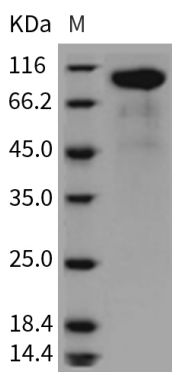
### Description

<b>Species</b>	Rat
<b>Source</b>	HEK293 Cells-derived Rat HER2/ErbB2 protein Met 4-Thr 656
<b>Calculated MW</b>	70.6 kDa
<b>Observed MW</b>	95-105 kDa
<b>Accession</b>	AAH61863.1
<b>Bio-activity</b>	Not validated for activity

### Properties

<b>Purity</b>	> 92 % as determined by reducing SDS-PAGE.
<b>Endotoxin</b>	< 1.0 EU per µg of the protein as determined by the LAL method.
<b>Storage</b>	Generally, lyophilized proteins are stable for up to 12 months when stored at -20 to -80°C. Reconstituted protein solution can be stored at 4-8°C for 2-7 days. Aliquots of reconstituted samples are stable at < -20°C for 3 months.
<b>Shipping</b>	This product is provided as lyophilized powder which is shipped with ice packs.
<b>Formulation</b>	Lyophilized from sterile PBS, pH 7.4 Normally 5% - 8% trehalose, mannitol and 0.01% Tween 80 are added as protectants before lyophilization. Please refer to the specific buffer information in the printed manual.
<b>Reconstitution</b>	Please refer to the printed manual for detailed information.

### Data



> 92 % as determined by reducing SDS-PAGE.

### Background

Epidermal growth factor receptor 2 (HER2), also known as ErbB2, NEU, and CD340, is a type I membrane glycoprotein, and belongs to the epidermal growth factor (EGF) receptor family. HER2 protein cannot bind growth factors due to the lacking of ligand binding domain of its own and autoinhibited constitutively. However, HER2 forms a heterodimer with other ligand-bound EGF receptor family members, therefore stabilizes ligand binding and enhances kinase-mediated activation of downstream molecules. HER2 plays a key role in development, cell proliferation and differentiation. HER2 gene has been reported to associate with malignancy and a poor prognosis in numerous carcinomas, including breast, prostate, ovarian, lung cancers and so on.

### For Research Use Only

Toll-free: 1-888-852-8623  
Web: [www.elabscience.com](http://www.elabscience.com)

Tel: 1-832-243-6086  
Email: [techsupport@elabscience.com](mailto:techsupport@elabscience.com)

Fax: 1-832-243-6017