

## Purified Anti-Human CD52 Antibody[5F7]

catalog number: AN002860P

**Note:** Centrifuge before opening to ensure complete recovery of vial contents.

### Description

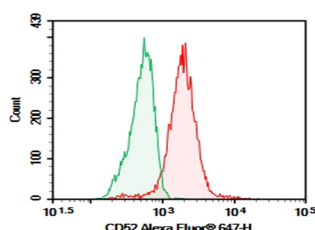
<b>Reactivity</b>	Human
<b>Immunogen</b>	Recombinant Human CD52 protein
<b>Host</b>	Mouse
<b>Isotype</b>	Mouse IgG3, $\kappa$
<b>Clone</b>	5F7
<b>Purification</b>	>98%, Protein A/G purified
<b>Conjugation</b>	Unconjugated
<b>Buffer</b>	Phosphate-buffered solution, pH 7.2, containing 0.05% non-protein stabilizer. Dialyze to completely remove the stabilizer prior to labeling.

### Applications

### Recommended Dilution

<b>FCM</b>	2 $\mu\text{g/mL}$ ( $1 \times 10^5$ - $5 \times 10^5$ cells)
------------	---------------------------------------------------------------

### Data



Human peripheral blood lymphocytes were stained with 0.2  $\mu\text{g}$  Purified Anti-Human CD52 Antibody[5F7] (Right) and 0.2  $\mu\text{g}$  Mouse IgG3,  $\kappa$  Isotype Control (Left), followed by Alexa Fluor® 647-conjugated Goat Anti-Mouse IgG Secondary Antibody.

### Preparation & Storage

<b>Storage</b>	Store at 4°C valid for 12 months or -20°C valid for long term storage, avoid freeze / thaw cycles.
<b>Shipping</b>	Ice bag

### Background

CD52, also known as Cambridge pathology antigen 1 (CAMPATH-1), is a 25-29 kD glycoprotein containing a large N-linked carbohydrate moiety. The actual molecule of CD52 is only 8-9 kD. It is expressed in the male reproductive tract and on virtually all lymphocytes (T and B cells), as well as macrophages/monocytes, eosinophils, and red cells. CD52 is thought to play a role in carrying and orienting carbohydrates. CD52 is a potent target for complement-mediated lysis and antibody-mediated cellular cytotoxicity and has been used as a depletion target for chronic lymphocytic leukemia (CLL)/lymphoma and immunosuppression.

### For Research Use Only