

RAB38 Polyclonal Antibody

Catalog Number:E-AB-19172



Note: Centrifuge before opening to ensure complete recovery of vial contents.

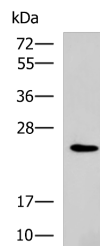
Description

Reactivity	Human, Mouse
Immunogen	Fusion protein of human RAB38
Host	Rabbit
Isotype	IgG
Purification	Antigen affinity purification
Conjugation	Unconjugated
Formulation	PBS with 0.05% NaN ₃ and 40% Glycerol,pH7.4

Applications Recommended Dilution

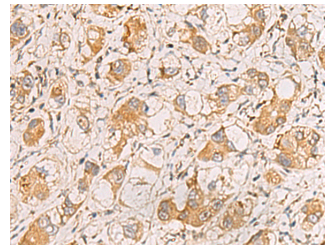
WB	1:500-1:2000
IHC	1:50-1:200
ELISA	1:5000-1:10000

Data

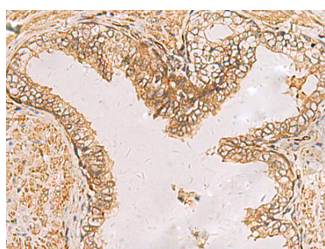


Western blot analysis of NIH/3T3 cell lysate using RAB38 Polyclonal Antibody at dilution of 1:900

Observed MW:Refer to figures
Calculated Mw:24 kDa



Immunohistochemistry of paraffin-embedded Human liver cancer tissue using RAB38 Polyclonal Antibody at dilution of 1:60(×200)



Immunohistochemistry of paraffin-embedded Human prostate cancer tissue using RAB38 Polyclonal Antibody at dilution of 1:60(×200)

Preparation & Storage

Storage Store at -20°C. Avoid freeze / thaw cycles.

Background

Ras-related protein Rab-38 is a protein that in humans is encoded by the RAB38 gene. On the basis of human genome

For Research Use Only

A Reliable Research Partner in Life Science and Medicine

Toll-free: 1-888-852-8623

Web: www.elabscience.com

Tel: 1-832-243-6086

Email: techsupport@elabscience.com

Fax: 1-832-243-6017

RAB38 Polyclonal Antibody

Catalog Number: E-AB-19172



sequence data, the RAB38 locus on chromosome 11 is flanked proximally by tyrosinase at 11q14-q21 and distally by EED at 11q14.2-q22.3 and MYO7A at 11q13.5. In melanocytic cells RAB38 gene expression may be regulated by MITF. May be involved in melanosomal transport and docking. Involved in the proper sorting of TYRP1.

For Research Use Only

A Reliable Research Partner in Life Science and Medicine

Toll-free: 1-888-852-8623

Tel: 1-832-243-6086

Fax: 1-832-243-6017

Web: www.elabscience.com

Email: techsupport@elabscience.com