

PE Anti-Human HLA-DP Antibody[B7/21]

Catalog Number: AN00566D

Note: Centrifuge before opening to ensure complete recovery of vial contents.

Description

Reactivity	Human
Host	Mouse
Isotype	Mouse IgG3
Clone No.	B7/21
Isotype Control	PE Mouse IgG3, κ Isotype Control[A112-3] [Product E-AB-F09752D]
Conjugation	PE
Conjugation Information	PE is designed to be excited by the Blue (488 nm), Green (532 nm) and Yellow-Green (561 nm) lasers and detected using an optical filter centered near 575 nm (e.g., a 585/42 nm bandpass filter).
Storage Buffer	Phosphate buffered solution, pH 7.2, containing 0.09% sodium azide and 1% BSA.

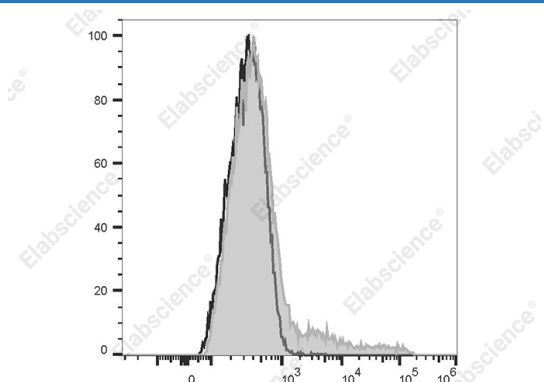
Applications

Recommended usage

FCM

Each lot of this antibody is quality control tested by flow cytometric analysis. **The amount of the reagent is suggested to be used 5 µL of antibody per test (millie cells in 100 µL staining volume or per 143 µL of whole blood).** Please check your vial before the experiment. Since applications vary, the appropriate dilutions must be determined for individual use.

Data



Staining of normal human peripheral blood cells with PE Anti-Human HLA-DP Antibody[B7/21](filled gray histogram) or PE Mouse IgG3 Isotype Control (empty black histogram). Cells in the lymphocytes gate were used for analysis.

Preparation & Storage

Storage	Keep as concentrated solution. This product can be stored at 2-8°C for 12 months. Please protected from prolonged exposure to light and do not freeze.
Shipping	Ice bag

Antigen Information

Alternate Names	MHC class II;Major Histocompatibility complex II;human leukocyte antigen
Uniprot ID	P20036
Gene ID	3113

For Research Use Only

Background

HLA-DP is heterodimeric cell surface glycoproteins comprised of an α (heavy) chain and a β (light) chain. It is expressed on B cells, activated T cells, monocytes/macrophages, dendritic cells, and other non-professional APCs.