

NF1 Polyclonal Antibody

catalog number: E-AB-53528

Note: Centrifuge before opening to ensure complete recovery of vial contents.

Description

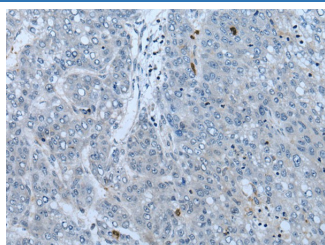
Reactivity	Human;Mouse;Rat
Immunogen	Synthetic peptide of human NF1
Host	Rabbit
Isotype	IgG
Purification	Antigen affinity purification
Conjugation	Unconjugated
buffer	Phosphate buffered solution, pH 7.4, containing 0.05% stabilizer and 50% glycerol.

Applications

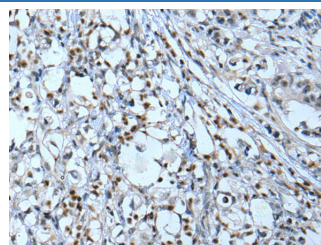
Recommended Dilution

IHC	1:40-1:250
------------	------------

Data



Immunohistochemistry of paraffin-embedded Human liver cancer tissue using NF1 Polyclonal Antibody at dilution of 1:65(×200)



Immunohistochemistry of paraffin-embedded Human gastric cancer tissue using NF1 Polyclonal Antibody at dilution of 1:65(×200)

Preparation & Storage

Storage	Store at -20°C Valid for 12 months. Avoid freeze / thaw cycles.
Shipping	The product is shipped with ice pack,upon receipt,store it immediately at the temperature recommended.

Background

This gene product appears to function as a negative regulator of the ras signal transduction pathway. Mutations in this gene have been linked to neurofibromatosis type 1, juvenile myelomonocytic leukemia and Watson syndrome. The mRNA for this gene is subject to RNA editing (CGA>UGA->Arg1306Term) resulting in premature translation termination. Alternatively spliced transcript variants encoding different isoforms have also been described for this gene. NF1 (Neurofibromin 1) is a Protein Coding gene. Diseases associated with NF1 include Neurofibromatosis-Noonan Syndrome and Neurofibromatosis, Type 1. Among its related pathways are Development VEGF signaling via VEGFR2 - generic cascades and RET signaling. GO annotations related to this gene include binding and phosphatidylcholine binding.

For Research Use Only