

# Recombinant Human CCL8/MCP-2 Protein (Human Cells, His Tag)



Catalog Number:PKSH032202

**Note:** Centrifuge before opening to ensure complete recovery of vial contents.

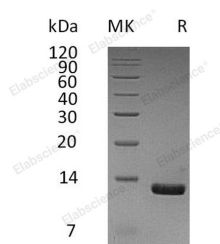
## Description

<b>Synonyms</b>	C-C Motif Chemokine 8;HC14;Monocyte Chemoattractant Protein 2;Monocyte Chemotactic Protein 2;MCP-2;Small-Inducible Cytokine A8;CCL8;MCP2;SCYA10;SCYA8;HC14
<b>Species</b>	Human
<b>Expression Host</b>	HEK293 Cells
<b>Sequence</b>	Gln24-Pro99
<b>Accession</b>	AAI26243.1
<b>Calculated Molecular Weight</b>	10.0 kDa
<b>Observed molecular weight</b>	13 kDa
<b>Tag</b>	C-His

## Properties

<b>Purity</b>	> 95 % as determined by reducing SDS-PAGE.
<b>Endotoxin</b>	< 1.0 EU per µg of the protein as determined by the LAL method.
<b>Storage</b>	Generally, lyophilized proteins are stable for up to 12 months when stored at -20 to -80°C. Reconstituted protein solution can be stored at 4-8°C for 2-7 days. Aliquots of reconstituted samples are stable at < -20°C for 3 months.
<b>Shipping</b>	This product is provided as lyophilized powder which is shipped with ice packs.
<b>Formulation</b>	Lyophilized from a 0.2 µm filtered solution of 20mM PB, 150mM NaCl, 1mM EDTA, pH 7.4. Normally 5 % - 8 % trehalose, mannitol and 0.01% Tween80 are added as protectants before lyophilization. Please refer to the specific buffer information in the p
<b>Reconstitution</b>	Please refer to the printed manual for detailed information.

## Data



> 95 % as determined by reducing SDS-PAGE.

## Background

Human Chemokine (C-C Motif) Ligand 8 (CCL8) is produced by human MG63 osteosarcoma cells. CCL8 shares 62% and 58% amino acid sequence identity with MCP-1 and MCP-3; respectively. All three MCP proteins are monocyte chemoattractants. CCL8 is chemotactic for and activates many different immune cells; including mast cells; eosinophils and basophils; which are implicated in allergic response; and monocytes; T cells; and NK cells that are involved in the inflammatory response. CCL8 elicits its effects by binding to several different cell surface receptors including CCR1;

## For Research Use Only

A Reliable Research Partner in Life Science and Medicine

Toll-free: 1-888-852-8623

Web: [www.elabscience.com](http://www.elabscience.com)

Tel: 1-832-243-6086

Email: [techsupport@elabscience.com](mailto:techsupport@elabscience.com)

Fax: 1-832-243-6017

# Recombinant Human CCL8/MCP-2 Protein (Human Cells, His Tag)

Catalog Number:PKSH032202

---



CCR2B and CCR5.

---

## For Research Use Only

A Reliable Research Partner in Life Science and Medicine

Toll-free: 1-888-852-8623

Tel: 1-832-243-6086

Fax: 1-832-243-6017

Web: [www.elabscience.com](http://www.elabscience.com)

Email: [techsupport@elabscience.com](mailto:techsupport@elabscience.com)