

CTRB1 Polyclonal Antibody

catalog number: E-AB-52723

Note: Centrifuge before opening to ensure complete recovery of vial contents.

Description

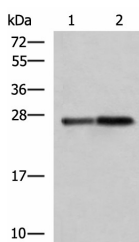
Reactivity	Human;Mouse;Rat
Immunogen	Fusion protein of human CTRB1
Host	Rabbit
Isotype	IgG
Purification	Antigen affinity purification
Conjugation	Unconjugated
Buffer	Phosphate buffered solution, pH 7.4, containing 0.05% stabilizer and 50% glycerol.

Applications

Recommended Dilution

WB	1:1000-1:5000
IHC	1:20-1:100

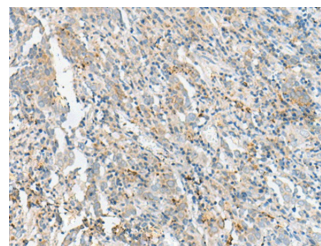
Data



Western blot analysis of Mouse pancreas tissue and Rat pancreas tissue lysates using CTRB1 Polyclonal Antibody at dilution of 1:1000

Observed-MW:Refer to figures

Calculated-MW:28 kDa



Immunohistochemistry of paraffin-embedded Human cervical cancer tissue using CTRB1 Polyclonal Antibody at dilution of 1:60(×200)

Preparation & Storage

Storage	Store at -20°C Valid for 12 months. Avoid freeze / thaw cycles.
Shipping	The product is shipped with ice pack,upon receipt,store it immediately at the temperature recommended.

Background

This gene encodes a member of the serine protease family of enzymes and forms a principal precursor of the pancreatic proteolytic enzymes. The encoded preproprotein is synthesized in the acinar cells of the pancreas and secreted into the small intestine where it undergoes proteolytic activation to generate a functional enzyme. This gene is located adjacent to a related chymotrypsinogen gene. This gene encodes distinct isoforms, some or all of which may undergo similar processing to generate the mature protein.

For Research Use Only