

Recombinant ATG4B Monoclonal Antibody

catalog number: **AN301739L**

Note: Centrifuge before opening to ensure complete recovery of vial contents.

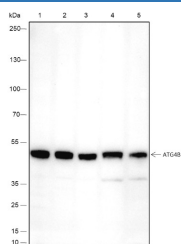
Description

Reactivity	Human;Rat;Mouse
Immunogen	Recombinant human ATG4B fragment
Host	Rabbit
Isotype	IgG, κ
Clone	A447
Purification	Protein A purified
Buffer	PBS, 50% glycerol, 0.05% Proclin 300, 0.05% protein protectant.

Applications Recommended Dilution

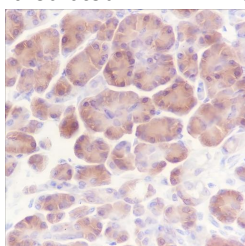
WB	1:500-1:1000
IHC	1:200-1:1000
FCM	1:50-1:100

Data

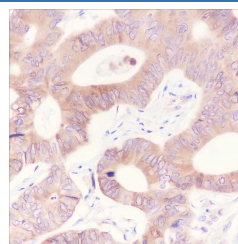


Western Blot with ATG4B Monoclonal Antibody at dilution of 1:1000. Lane 1: 293T, Lane 2: Ramos, Lane 3: PC-12, Lane 4: Mouse brain, Lane 5: Rat brain

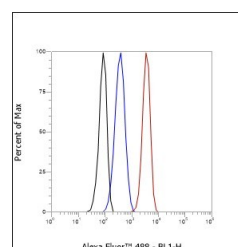
Observed-MW:44 kDa
Calculated-MW:44 kDa



Immunohistochemistry of paraffin-embedded Human pancreatic cancer using ATG4B Monoclonal Antibody at dilution of 1:1000.



Immunohistochemistry of paraffin-embedded Human colon cancer using ATG4B Monoclonal Antibody at dilution of 1:1000.



Flow cytometric analysis of human ATG4B expression on Jurkat cells. Cells were stained with purified anti-Human ATG4B, then a Alexa Fluor 488-conjugated second step antibody. The histogram were derived from events with the forward and side light-scatter characteristics of intact cells.

Preparation & Storage

Storage	Store at -20°C Valid for 12 months. Avoid freeze / thaw cycles.
Shipping	Ice bag

Background

For Research Use Only

Toll-free: 1-888-852-8623
Web: www.elabscience.com

Tel: 1-832-243-6086
Email: techsupport@elabscience.com

Fax: 1-832-243-6017

Rev. V1.0

ATG4B is a member of the autophagin protein family. Its cysteine protease activity is required for the cytoplasm to vacuole transport (Cvt) and autophagy. ATG4B cleaves the C-terminal amino acid of ATG8 family proteins MAP1LC3, GABARAPL1, GABARAPL2 and GABARAP, to reveal a C-terminal glycine. Exposure of the glycine at the C-terminus is essential for ATG8 proteins conjugation to phosphatidylethanolamine (PE) and insertion to membranes, which is necessary for autophagy.