

ATAD5 Polyclonal Antibody

catalog number: E-AB-16267

Note: Centrifuge before opening to ensure complete recovery of vial contents.

Description

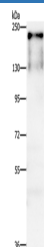
Reactivity	Human
Immunogen	Synthetic peptide of human ATAD5
Host	Rabbit
Isotype	IgG
Purification	Affinity purification
Conjugation	Unconjugated
Buffer	Phosphate buffered solution, pH 7.4, containing 0.05% stabilizer and 50% glycerol.

Applications

Recommended Dilution

WB	1:200-1:1000
-----------	--------------

Data



Western Blot analysis of A431 cell using ATAD5 Polyclonal

Antibody at dilution of 1:750

Calculated-MV:207 kDa

Preparation & Storage

Storage	Store at -20°C Valid for 12 months. Avoid freeze / thaw cycles.
Shipping	The product is shipped with ice pack, upon receipt, store it immediately at the temperature recommended.

Background

ATAD5 (ATPase family, AAA domain containing 5), also known as chromosome fragility-associated gene 1 protein, FRAG1 or ELG1, is a 1,844 amino acid nuclear protein that is involved in the DNA damage response and belongs to the AAA ATPase family. Existing as two alternatively spliced isoforms, ATAD5 interacts with Rad9 in growing cells where it assists in interactions between Rad9 and Bcl-2.

For Research Use Only