

Recombinant Human ROBO2 Protein (His Tag)

Catalog Number:PKSH031693



Note: Centrifuge before opening to ensure complete recovery of vial contents.

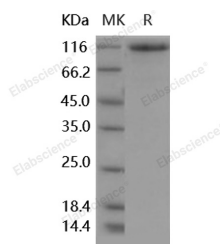
Description

Synonyms	KIAA1568;ROBO2;SAX3
Species	Human
Expression Host	HEK293 Cells
Sequence	Met 1-Pro859
Accession	Q9HCK4-1
Calculated Molecular Weight	94.2 kDa
Observed molecular weight	116 kDa
Tag	C-His

Properties

Purity	> 95 % as determined by reducing SDS-PAGE.
Endotoxin	< 1.0 EU per µg of the protein as determined by the LAL method.
Storage	Generally, lyophilized proteins are stable for up to 12 months when stored at -20 to -80°C. Reconstituted protein solution can be stored at 4-8°C for 2-7 days. Aliquots of reconstituted samples are stable at < -20°C for 3 months.
Shipping	This product is provided as lyophilized powder which is shipped with ice packs.
Formulation	Lyophilized from sterile PBS, pH 7.4 Normally 5 % - 8 % trehalose, mannitol and 0.01 % Tween80 are added as protectants before lyophilization. Please refer to the specific buffer information in the printed manual.
Reconstitution	Please refer to the printed manual for detailed information.

Data



> 95 % as determined by reducing SDS-PAGE.

Background

ROBO2 belongs to the ROBO family. Members of the ROBO family are a group of highly conserved transmembrane glycoproteins that make up a small subgroup of the immunoglobulin (Ig) superfamily. They are best known for their roles as receptors for the Slit family of repellent axon guidance cues. In structure, ROBOs are characterized by five C2-type Ig-like repeats, three fibronectin type III domains, a transmembrane region, and an intracellular domain with three (ROBO3) or four (ROBO1, 2) CC (conserved cytoplasmic) motifs. ROBO2 is a receptor for SLIT2, and probably SLIT1, which are thought to act as molecular guidance cue in cellular migration, including axonal navigation at the ventral midline of the neural tube and projection of axons to different regions during neuronal development. ROBO2 also abrogates SLIT-ROBO signaling in vitro.

For Research Use Only

A Reliable Research Partner in Life Science and Medicine

Toll-free: 1-888-852-8623

Web: www.elabscience.com

Tel: 1-832-243-6086

Email: techsupport@elabscience.com

Fax: 1-832-243-6017