

# PTH1R Polyclonal Antibody

catalog number: E-AB-18982

**Note:** Centrifuge before opening to ensure complete recovery of vial contents.

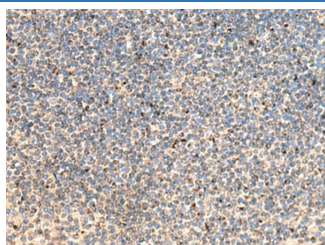
## Description

<b>Reactivity</b>	Human;Mouse;Rat
<b>Immunogen</b>	Fusion protein of human PTH1R
<b>Host</b>	Rabbit
<b>Isotype</b>	IgG
<b>Purification</b>	Antigen affinity purification
<b>Conjugation</b>	Unconjugated
<b>buffer</b>	Phosphate buffered solution, pH 7.4, containing 0.05% stabilizer and 50% glycerol.

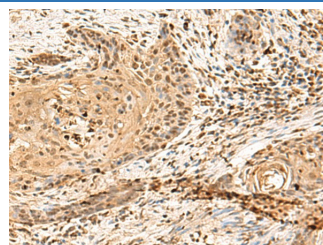
## Applications

Applications	Recommended Dilution
IHC	1:50-1:300

## Data



Immunohistochemistry of paraffin-embedded Human tonsil tissue using PTH1R Polyclonal Antibody at dilution of 1:65(×200)



Immunohistochemistry of paraffin-embedded Human esophagus cancer tissue using PTH1R Polyclonal Antibody at dilution of 1:65(×200)

## Preparation & Storage

<b>Storage</b>	Store at -20°C Valid for 12 months. Avoid freeze / thaw cycles.
<b>Shipping</b>	The product is shipped with ice pack, upon receipt, store it immediately at the temperature recommended.

## Background

The protein encoded by this gene is a member of the G-protein coupled receptor family 2. This protein is a receptor for parathyroid hormone (PTH) and for parathyroid hormone-like hormone (PTHrP). The activity of this receptor is mediated by G proteins which activate adenylyl cyclase and also a phosphatidylinositol-calcium second messenger system. Defects in this receptor are known to be the cause of Jansen's metaphyseal chondrodysplasia (JMC), chondrodysplasia Blomstrand type (BOCD), as well as enchondromatosis. Two transcript variants encoding the same protein have been found for this gene. [provided by RefSeq, May 2010]

## For Research Use Only