

Recombinant Human NHP2/NOLA2 Protein (His Tag)

Catalog Number: PKSH032829

Note: Centrifuge before opening to ensure complete recovery of vial contents.

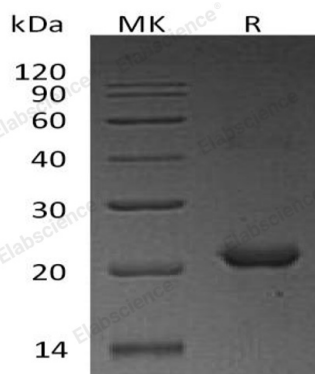
Description

Species	Human
Source	E.coli-derived Human NHP2;NOLA2 protein Met 1-Leu153, with an N-terminal His
Calculated MW	19.3 kDa
Observed MW	22 kDa
Accession	Q9NX24
Bio-activity	Not validated for activity

Properties

Purity	> 95 % as determined by reducing SDS-PAGE.
Concentration	Subject to label value.
Endotoxin	< 1.0 EU per µg of the protein as determined by the LAL method.
Storage	Store at < -20°C, stable for 6 months. Please minimize freeze-thaw cycles.
Shipping	This product is provided as liquid. It is shipped at frozen temperature with blue ice/ gel packs. Upon receipt, store it immediately at < - 20°C.
Formulation	Supplied as a 0.2 µm filtered solution of 20mM Tris-HCl, 100mM NaCl, 1mM DTT, pH 8.0.

Data



> 95 % as determined by reducing SDS-PAGE.

Background

NHP2 belongs to the H/ACA snoRNPs gene family. snoRNPs are involved in various aspects of rRNA processing and modification and have been organized into 2 families: C/D and H/ACA. NHP2 forms a small ribonucleoprotein particle with GAR1 (NOLA1). NHP2 is involved in a variety of aspects of rRNA processing and modification. NHP2 localizes to the dense fibrillar component of the nucleolus and in nuclear Cajal bodies. NHP2 may also be required for correct processing or intranuclear trafficking of TERC, the RNA component of the telomerase reverse transcriptase (TERT) holoenzyme.

For Research Use Only

Toll-free: 1-888-852-8623
Web: www.elabscience.com

Tel: 1-832-243-6086
Email: techsupport@elabscience.com

Fax: 1-832-243-6017