

# Purified Anti-Human TRAV12-1 Antibody[S511]

catalog number: AN003730P

**Note:** Centrifuge before opening to ensure complete recovery of vial contents.

## Description

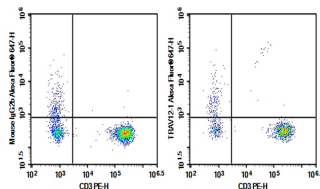
<b>Reactivity</b>	Human
<b>Immunogen</b>	Recombinant Human TRAV12-1 protein
<b>Host</b>	Mouse
<b>Isotype</b>	Mouse IgG2b, $\kappa$
<b>Clone</b>	S511
<b>Purification</b>	>98%, Protein A/G purified
<b>Conjugation</b>	Unconjugated
<b>buffer</b>	PBS, pH 7.2. Contains 0.05% proclin 300.

## Applications

## Recommended Dilution

<b>FCM</b>	2 $\mu\text{g}/\text{mL}$ ( $1 \times 10^5$ - $5 \times 10^5$ cells)
------------	--

## Data



Human peripheral blood lymphocytes were stained with 0.2  $\mu\text{g}$  Purified Anti-Human TRAV12-1 Antibody[S511] (Right) and 0.2  $\mu\text{g}$  mouse IgG2b,  $\kappa$  Isotype Control (Left), followed by AF647-conjugated goat Anti-mouse IgG Secondary Antibody, then anti-human CD3 PE-conjugated Monoclonal Antibody.

## Preparation & Storage

<b>Storage</b>	Store at 4°C valid for 12 months or -20°C valid for long term storage, avoid freeze / thaw cycles.
<b>Shipping</b>	Ice bag

## Background

The ability of T cell receptors (TCR) to discriminate foreign from self-peptides presented by major histocompatibility complex (MHC) class II molecules is essential for an effective adaptive immune response. TCR recognition of self-peptides has been linked to autoimmune disease. Mutant self-peptides have been associated with tumors. Engagement of TCRs by a family of bacterial toxins known as superantigens has been responsible for toxic shock syndrome. Autoantibodies to V beta segments of T cell receptors have been isolated from patients with rheumatoid arthritis (RA) and systemic lupus erythematosus (SLE). The autoantibodies block TH1-mediated inflammatory autodestructive reactions and are believed to be a method by which the immune system compensates for disease (ref5). T Cell and TCR Diversity Most human T cells express the TCR alpha-beta and either CD4 or CD8 molecule (single positive, SP). A small number of T cells lack both CD4 and CD8 (double negative, DN). Increased percentages of alpha-beta DN T cells have been identified in some autoimmune and immunodeficiency disorders. Gamma-delta T cells are primarily found within the epithelium. They show less TCR diversity and recognize antigens differently than alpha-beta T cells. Subsets of gamma-delta T cells have shown antitumor and immunoregulatory activity.

## For Research Use Only