

Elab Fluor® 647 Anti-Mouse CD45 Antibody[30-F11]

Catalog Number: E-AB-F1136UM

Note: Centrifuge before opening to ensure complete recovery of vial contents.

Description

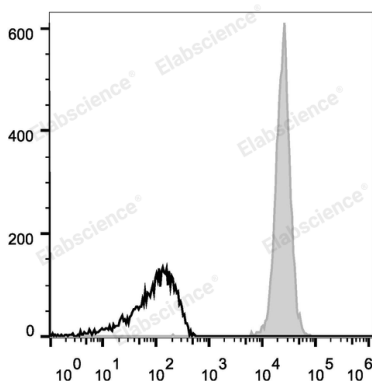
Reactivity	Mouse
Host	Rat
Isotype	Rat IgG2b, κ
Clone No.	30-F11
Isotype Control	Elab Fluor® 647 Rat IgG2b, κ Isotype Control[LTF-2] [Product E-AB-F09843M]
Conjugation	Elab Fluor® 647
Conjugation Information	Elab Fluor® 647 is designed to be excited by the Red laser (627-640 nm) and detected using an optical filter centered near 670 nm (e.g., a 660/20 nm bandpass filter).
Storage Buffer	Phosphate buffered solution, pH 7.2, containing 0.09% stabilizer and 1% protein protectant.

Applications

Recommended usage

FCM	Each lot of this antibody is quality control tested by flow cytometric analysis. Please check your vial before the experiment. Since applications vary, the appropriate dilutions must be determined for individual use. We suggest each investigator should titrate the reagent to obtain optimal results [The recommended concentration is 0.1-1 $\mu\text{g}/10^6$ cells in 100 μL volume].
------------	---

Data



C57BL/6 murine splenocytes are stained with Elab Fluor® 647 Anti-Mouse CD45 Antibody (filled gray histogram).
Unstained splenocytes (empty black histogram) are used as control.

Preparation & Storage

Storage	Keep as concentrated solution. This product can be stored at 2-8°C for 12 months. Please protected from prolonged exposure to light and do not freeze.
Shipping	Ice bag

Antigen Information

Alternate Names	CD45;L-CA;Ly-5;Ptpnc;Receptor-type tyrosine-protein phosphatase C;T200
Uniprot ID	P06800
Gene ID	19264

For Research Use Only

Background

CD45 is a 180-240 kD glycoprotein also known as the leukocyte common antigen (LC A), T200, or Ly-5. It is a member of the protein tyrosine phosphatase (PTP) family, expressed on all hematopoietic cells except mature erythrocytes and platelets. There are different isoforms of CD45 that arise from alternative splicing of exons 4, 5, and 6, which encode A, B, and C determinants, respectively. CD45 plays a key role in TCR and BCR signal transduction. These isoforms are very specific to the activation and maturation state of the cell as well as cell type. The primary ligands for CD45 are galectin-1, CD2, CD3, CD4, TCR, CD22, and Thy-1.