

PE Anti-Rat CD1d Antibody[WTH-1]

Catalog Number: AN00661D

Note: Centrifuge before opening to ensure complete recovery of vial contents.

Description

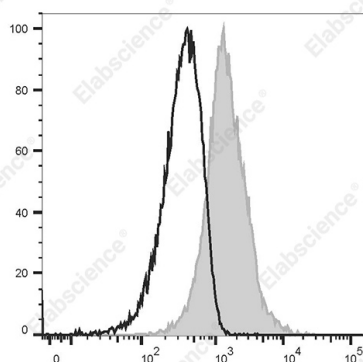
Reactivity	Rat
Host	Mouse
Isotype	Mouse IgG2a, κ
Clone No.	WTH-1
Isotype Control	PE Mouse IgG2a, κ Isotype Control[C1.18.4] [Product E-AB-F09802D]
Conjugation	PE
Conjugation Information	PE is designed to be excited by the Blue (488 nm), Green (532 nm) and Yellow-Green (561 nm) lasers and detected using an optical filter centered near 575 nm (e.g., a 585/42 nm bandpass filter).
Storage Buffer	Phosphate buffered solution, pH 7.2, containing 0.09% stabilizer.

Applications

Recommended usage

FCM	Each lot of this antibody is quality control tested by flow cytometric analysis. The amount of the reagent is suggested to be used 5 μL of antibody per test (million cells in 100 μL staining volume or per 100 μL of whole blood). Please check your vial before the experiment. Since applications vary, the appropriate dilutions must be determined for individual use.
------------	---

Data



Staining of Rat splenocytes cells with PE Anti-Rat CD1d Antibody[WTH-1] (left) or PE Mouse IgG2a Isotype Control (right). Total viable cells were used for analysis.

Preparation & Storage

Storage	Keep as concentrated solution. This product can be stored at 2-8°C for 24 months. Please protected from prolonged exposure to light and do not freeze.
Shipping	Ice bag

Antigen Information

Alternate Names	Antigen-presenting glycoprotein CD1d;Cd1d1
Uniprot ID	Q63493
Gene ID	25109

For Research Use Only

Background

CD1d is a type I transmembrane protein and member of the MHC family that associates with β 2-microglobulin on the cell surface. CD1d is expressed by antigen presenting cells (such as dendritic cells, monocytes, macrophages and B cells), thymocytes, and intestinal epithelial cells. CD1d presents glycolipids to Va14i TCR+ iNKT cells.