

## APBA2 Polyclonal Antibody

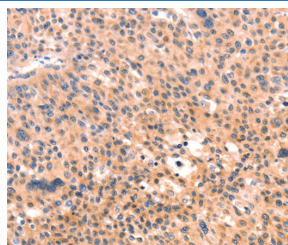
**catalog number:** E-AB-16163

**Note:** Centrifuge before opening to ensure complete recovery of vial contents.

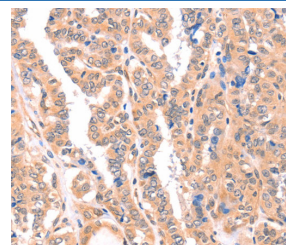
Description	
<b>Reactivity</b>	Human
<b>Immunogen</b>	Synthetic peptide of human APBA2
<b>Host</b>	Rabbit
<b>Isotype</b>	IgG
<b>Purification</b>	Affinity purification
<b>Conjugation</b>	Unconjugated
<b>Buffer</b>	Phosphate buffered solution, pH 7.4, containing 0.05% stabilizer and 50% glycerol.

Applications	Recommended Dilution
IHC	1:100-1:300

### Data



Immunohistochemistry of paraffin-embedded Human liver cancer tissue using APBA2 Polyclonal Antibody at dilution 1:80



Immunohistochemistry of paraffin-embedded Human thyroid cancer tissue using APBA2 Polyclonal Antibody at dilution 1:80

Preparation & Storage	
<b>Storage</b>	Store at -20°C Valid for 12 months. Avoid freeze / thaw cycles.
<b>Shipping</b>	The product is shipped with ice pack, upon receipt, store it immediately at the temperature recommended.

### Background

The protein encoded by this gene is a member of the X11 protein family. It is a neuronal adapter protein that interacts with the Alzheimer's disease amyloid precursor protein (APP). It stabilizes APP and inhibits production of proteolytic APP fragments including the A beta peptide that is deposited in the brains of Alzheimer's disease patients. This gene product is believed to be involved in signal transduction processes. It is also regarded as a putative vesicular trafficking protein in the brain that can form a complex with the potential to couple synaptic vesicle exocytosis to neuronal cell adhesion. Multiple transcript variants encoding different isoforms have been found for this gene.