

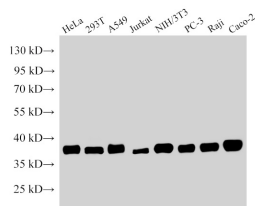
NPM1 Polyclonal Antibody

catalog number: E-AB-40477

Note: Centrifuge before opening to ensure complete recovery of vial contents.

Description	
Reactivity	Human;Mouse;Rat
Immunogen	Recombinant Mouse Nucleophosmin protein
Host	Rabbit
Isotype	IgG
Purification	Antigen Affinity Purification
Conjugation	Unconjugated
Buffer	PBS with 0.05% Proclin300, 1% protective protein and 50% glycerol, pH7.4
Applications	Recommended Dilution
WB	1:10000-1:20000
IHC	1:200-1:500

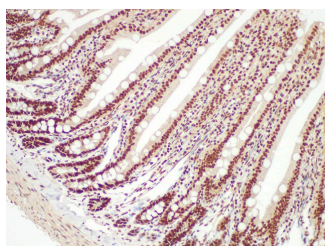
Data



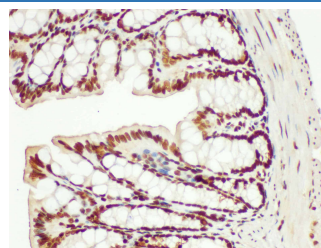
Western Blot analysis of 1)Hela, 2)293T, 3)A549, 4)Jurkat, 5)NIH/3T3, 6)PC-3, 7)Raji, 8)Caco-2 using NPM1 Polyclonal Antibody at dilution of 1:15000

Observed-MW:37 kDa

Calculated-MW:32 kDa



Immunohistochemistry of paraffin-embedded Rat colon using NPM1 Polyclonal Antibody at dilution of 1:200.



Immunohistochemistry of paraffin-embedded Mouse colon using NPM1 Polyclonal Antibody at dilution of 1:200.

Preparation & Storage	
Storage	Store at -20°C Valid for 12 months. Avoid freeze / thaw cycles.
Shipping	The product is shipped with ice pack, upon receipt, store it immediately at the temperature recommended.

Background

For Research Use Only

Nucleophosmin (NPM1,B23) is a putative ribosome assembly factor with a high affinity for peptides containing nuclear localization signals (NLSs). The transport of proteins across the nuclear envelope is a selective, multistep process involving several cytoplasmic factors. Proteins must be recognized as import substrates, dock at the nuclear pore complex and translocate across the nuclear envelope in an ATP-dependent fashion. Several cytosolic and nuclear proteins that are central to this process have been identified. The 38 kDa nuclear protein nucleophosmin is involved in ribosomal assembly and rRNA transport. It is an abundant protein that is highly phosphorylated by Cdc2 kinase during mitosis.