

HMGCS2 Polyclonal Antibody

catalog number: E-AB-64961

Note: *Centrifuge before opening to ensure complete recovery of vial contents.*

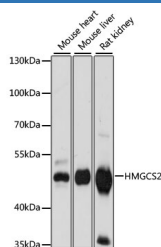
Description

Reactivity	Human;Mouse;Rat
Immunogen	Recombinant fusion protein of human HMGCS2 (NP_005509.1).
Host	Rabbit
Isotype	IgG
Purification	Affinity purification
Buffer	Phosphate buffered solution, pH 7.4, containing 0.05% stabilizer and 50% glycerol.

Applications

Applications	Recommended Dilution
WB	1:500-1:2000
IHC	1:50-1:100
IF	1:50-1:100

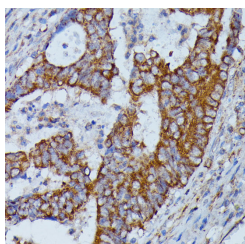
Data



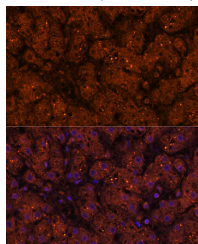
Western blot analysis of extracts of various cell lines using HMGCS2 Polyclonal Antibody at dilution of 1:1000.

Observed-MV:50 kDa

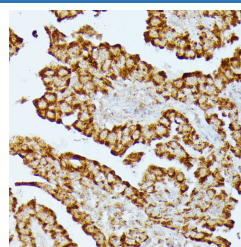
Calculated-MV:50 kDa/52 kDa/56 kDa



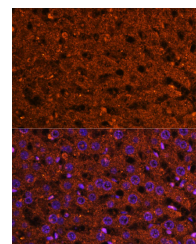
Immunohistochemistry of paraffin-embedded Human colon carcinoma using HMGCS2 Polyclonal Antibody at dilution of 1:100 (40x lens).



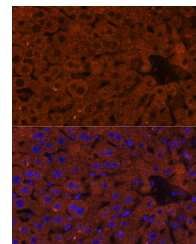
Immunofluorescence analysis of Human liver using HMGCS2 Polyclonal Antibody at dilution of 1:100 (40x lens). Blue: DAPI for nuclear staining.



Immunohistochemistry of paraffin-embedded Human thyroid cancer using HMGCS2 Polyclonal Antibody at dilution of 1:100 (40x lens).



Immunofluorescence analysis of Rat liver using HMGCS2 Polyclonal Antibody at dilution of 1:100 (40x lens). Blue: DAPI for nuclear staining.



Immunofluorescence analysis of Mouse liver using HMGCS2 Polyclonal Antibody at dilution of 1:100 (40x lens). Blue: DAPI for nuclear staining.

For Research Use Only

Preparation & Storage

Storage

Store at -20°C Valid for 12 months. Avoid freeze / thaw cycles.

Shipping

The product is shipped with ice pack, upon receipt, store it immediately at the temperature recommended.

Background

The protein encoded by this gene belongs to the HMG-CoA synthase family. It is a mitochondrial enzyme that catalyzes the first reaction of ketogenesis, a metabolic pathway that provides lipid-derived energy for various organs during times of carbohydrate deprivation, such as fasting. Mutations in this gene are associated with HMG-CoA synthase deficiency. Alternatively spliced transcript variants encoding different isoforms have been found for this gene.

For Research Use Only