

mCherry-Tag Monoclonal Antibody

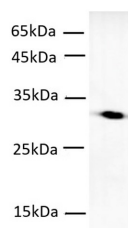
catalog number: E-AB-48007

Note: Centrifuge before opening to ensure complete recovery of vial contents.

Description	
Reactivity	All
Immunogen	Recombinant Discosoma sp. mCherry Protein
Host	Mouse
Isotype	IgG1
Clone	4E3
Purification	Protein A/G Purification
Conjugation	Unconjugated
Buffer	PBS with 0.05% Proclin300, 1% protective protein and 50% glycerol, pH7.4

Applications	Recommended Dilution
WB	1:1000-2000
IF	1:6000-12000

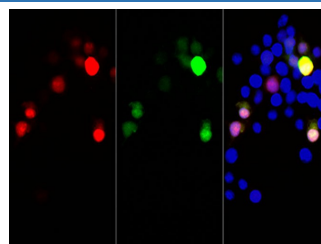
Data



Western blot of mCherry protein with anti-mCherry antibody at dilution of 1:2000.

Observed-MW:30 kDa

Calculated-MW:30 kDa



Immunofluorescent analysis of 293F cells transfected with the mCherry, using anti-mCherry monoclonal antibody at dilution of 1:12000.

Preparation & Storage

Storage	Store at -20°C Valid for 12 months. Avoid freeze / thaw cycles.
Shipping	The product is shipped with ice pack, upon receipt, store it immediately at the temperature recommended.

Background

mCherry is a member of the mFruits family of monomeric red fluorescent proteins (mRFPs). As a RFP, mCherry was derived from DsRed of *Discosoma* sea anemones unlike green fluorescent proteins (GFPs) which are often derived from *Aequorea victoria* jellyfish. mCherry belongs to the group of fluorescent protein chromophores used as instruments to visualize genes and analyze their functions in experiments.