

## Recombinant METTL3 Monoclonal Antibody

catalog number: **AN301064L**

**Note:** Centrifuge before opening to ensure complete recovery of vial contents.

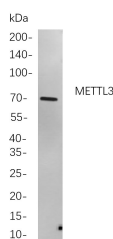
### Description

<b>Reactivity</b>	Human;Mouse;Rat
<b>Immunogen</b>	Recombinant Human METTL3 protein
<b>Host</b>	Rabbit
<b>Isotype</b>	IgG, $\kappa$
<b>Clone</b>	B819
<b>Purification</b>	Protein A
<b>Buffer</b>	PBS, 50% glycerol, 0.05% Proclin 300, 0.05% protein protectant.

### Applications

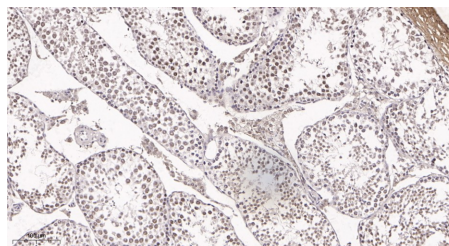
Applications	Recommended Dilution
IHC	1:200-400
WB	1:1000-5000

### Data

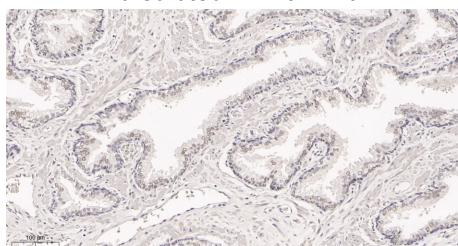


Western Blot with Recombinant METTL3 Monoclonal Antibody at dilution of 1:1000 dilution. Lane A: NCCIT cells.

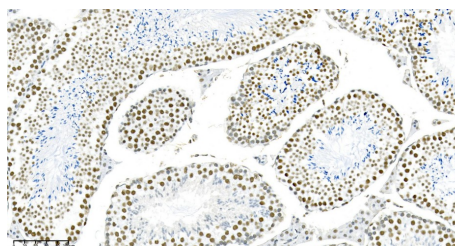
**Observed-MW:70 kDa**  
**Calculated-MW:64 kDa**



Immunohistochemistry of paraffin-embedded mouse testis tissue using Recombinant METTL3 Monoclonal Antibody at dilution of 1:200.



Immunohistochemistry of paraffin-embedded prostate cancer tissue using Recombinant METTL3 Monoclonal Antibody at dilution of 1:200.



Immunohistochemistry of paraffin-embedded mouse testicles using Recombinant METTL3 Monoclonal Antibody at dilution of 1:200.

### Preparation & Storage

<b>Storage</b>	Store at -20°C Valid for 12 months. Avoid freeze / thaw cycles.
<b>Shipping</b>	Ice bag

### Background

This gene encodes the 70 kDa subunit of MT-A which is part of N6-adenosine-methyltransferase. This enzyme is involved in the posttranscriptional methylation of internal adenosine residues in eukaryotic mRNAs, forming N6-methyladenosine.

### For Research Use Only