

SMOC1 Polyclonal Antibody

catalog number: **E-AB-92260**

Note: Centrifuge before opening to ensure complete recovery of vial contents.

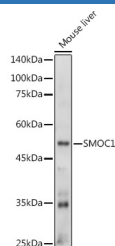
Description

Reactivity	Human;Mouse
Immunogen	Recombinant fusion protein of human SMOC1
Host	Rabbit
Isotype	IgG
Purification	Affinity purification
Buffer	Phosphate buffered solution, pH 7.4, containing 0.05% stabilizer and 50% glycerol.

Applications

Applications	Recommended Dilution
WB	1:500-1:2000
IHC	1:50-1:200

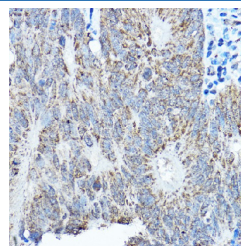
Data



Western blot analysis of extracts of Mouse liver using SMOC1 Polyclonal Antibody at 1:1000 dilution.

Observed-MW:48 kDa

Calculated-MW:48 kDa



Immunohistochemistry of paraffin-embedded human colon carcinoma using SMOC1 Polyclonal Antibody at dilution of 1:200 (40x lens). Perform high pressure antigen retrieval with 10 mM citrate buffer pH 6.0 before commencing with IHC staining protocol.

Preparation & Storage

Storage	Store at -20°C Valid for 12 months. Avoid freeze / thaw cycles.
Shipping	The product is shipped with ice pack, upon receipt, store it immediately at the temperature recommended.

Background

This gene encodes a multi-domain secreted protein that may have a critical role in ocular and limb development. Mutations in this gene are associated with microphthalmia and limb anomalies. Alternatively spliced transcript variants encoding different isoforms have been found for this gene.

For Research Use Only