

DNMT1 Polyclonal Antibody

catalog number: E-AB-93132

Note: Centrifuge before opening to ensure complete recovery of vial contents.

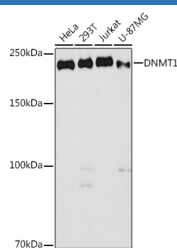
Description

Reactivity	Human;Mouse;Rat
Immunogen	Recombinant fusion protein of human DNMT1
Host	Rabbit
Isotype	IgG
Purification	Affinity purification
Buffer	Phosphate buffered solution, pH 7.4, containing 0.05% stabilizer and 50% glycerol.

Applications

Applications	Recommended Dilution
WB	1:500-1:2000
IHC	1:50-1:200
IP	1:50-1:200

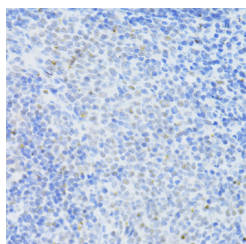
Data



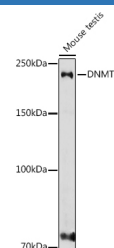
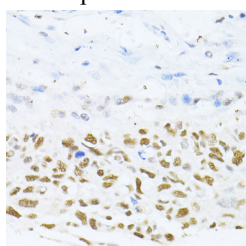
Western blot analysis of extracts of various cell lines using DNMT1 Polyclonal Antibody at 1:1000 dilution.

Observed-MW:200 kDa

Calculated-MW:144 kDa/183 kDa/184 kDa



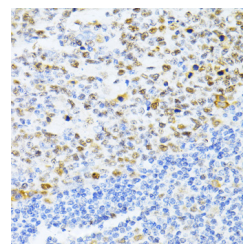
Immunohistochemistry of paraffin-embedded rat spleen using DNMT1 Polyclonal Antibody at dilution of 1:100 (40x lens). Perform microwave antigen retrieval with 10 mM PBS buffer pH 7.2 before commencing with IHC staining protocol.



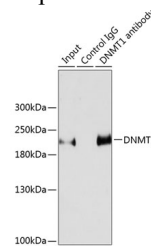
Western blot analysis of extracts of various cell lines using DNMT1 Polyclonal Antibody at 1:1000 dilution.

Observed-MW:200 kDa

Calculated-MW:144 kDa/183 kDa/184 kDa



Immunohistochemistry of paraffin-embedded human tonsil using DNMT1 Polyclonal Antibody at dilution of 1:100 (40x lens). Perform microwave antigen retrieval with 10 mM PBS buffer pH 7.2 before commencing with IHC staining protocol.



For Research Use Only

Immunohistochemistry of paraffin-embedded human lung cancer using DNMT1 Polyclonal Antibody at dilution of 1:100 (40x lens). Perform microwave antigen retrieval with 10 mM PBS buffer pH 7.2 before commencing with IHC staining protocol.

Immunoprecipitation analysis of 200ug extracts of HeLa cells using 3ug DNMT1 Polyclonal Antibody. Western blot was performed from the immunoprecipitate using DNMT1 Polyclonal Antibody at a dilution of 1:1000.

Observed-MW:200 kDa

Calculated-MW:144 kDa/183 kDa/184 kDa

Preparation & Storage

Storage

Store at -20°C Valid for 12 months. Avoid freeze / thaw cycles.

Shipping

The product is shipped with ice pack, upon receipt, store it immediately at the temperature recommended.

Background

This gene encodes an enzyme that transfers methyl groups to cytosine nucleotides of genomic DNA. This protein is the major enzyme responsible for maintaining methylation patterns following DNA replication and shows a preference for hemi-methylated DNA. Methylation of DNA is an important component of mammalian epigenetic gene regulation. Aberrant methylation patterns are found in human tumors and associated with developmental abnormalities. Variation in this gene has been associated with cerebellar ataxia, deafness, and narcolepsy, and neuropathy, hereditary sensory, type IE. Alternative splicing results in multiple transcript variants.

For Research Use Only