

PSMA Polyclonal Antibody

catalog number: **D-AB-10276L**

Note: Centrifuge before opening to ensure complete recovery of vial contents.

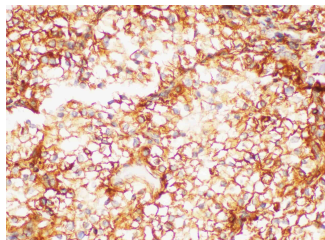
Description	
Reactivity	Human;Mouse;Rat
Immunogen	Recombinant Mouse PSMA Protein expressed by E.coli
Host	Rabbit
Isotype	IgG
Purification	Antigen Affinity Purification
Buffer	PBS with 0.05% Proclin300, 1% protective protein and 50% glycerol, pH7.4
Applications	Recommended Dilution
WB	1:500-1:1000
IHC	1:100-1:300
Data	



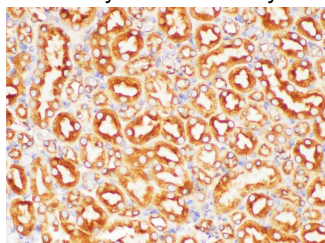
Western blot with PSMA Polyclonal Antibody at dilution of 1:1000.lane 1:LNCaP whole cell lysate

Observed-MW:110 kDa

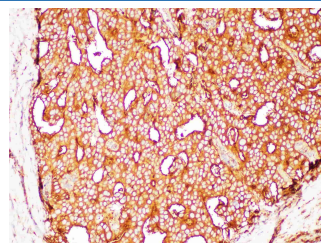
Calculated-MW:86 kDa



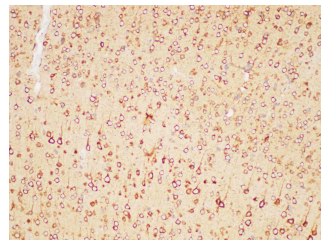
Immunohistochemistry of paraffin-embedded Human kidney cancer using PSMA Polyclonal Antibody at dilution of 1:200



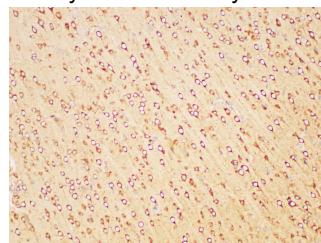
Immunohistochemistry of paraffin-embedded Mouse kidney using PSMA Polyclonal Antibody at dilution of 1:200



Immunohistochemistry of paraffin-embedded Human prostate cancer using PSMA Polyclonal Antibody at dilution of 1:200



Immunohistochemistry of paraffin-embedded Mouse brain using PSMA Polyclonal Antibody at dilution of 1:200



Immunohistochemistry of paraffin-embedded Rat brain using PSMA Polyclonal Antibody at dilution of 1:200

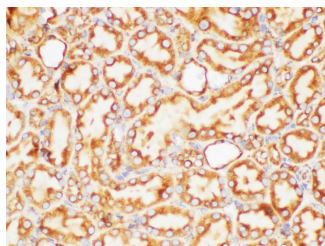
For Research Use Only

Toll-free: 1-888-852-8623
Web: www.elabscience.com

Tel: 1-832-243-6086
Email: techsupport@elabscience.com

Fax: 1-832-243-6017

Rev. V2.1



Immunohistochemistry of paraffin-embedded Rat kidney
using PSMA Polyclonal Antibody at dilution of 1:200

Preparation & Storage

Storage

Store at -20°C Valid for 12 months. Avoid freeze / thaw cycles.

Shipping

The product is shipped with ice pack, upon receipt, store it immediately at the temperature recommended.

Background

Prostate-specific membrane antigen (PSMA) is expressed in normal and malignant prostatic epithelium and in a subset of non-prostatic tissues. In prostate cancer, PSMA expression has been shown to correlate with disease progression, with highest levels expressed in hormone-refractory and metastatic disease. The cellular localization of PSMA is cytoplasmic and/or membranous.

For Research Use Only

Toll-free: 1-888-852-8623
Web: www.elabscience.com

Tel: 1-832-243-6086
Email: techsupport@elabscience.com

Fax: 1-832-243-6017

Rev. V2.1