

Recombinant Human UBE2D3 Protein

Catalog Number:PKSH033183



Note: Centrifuge before opening to ensure complete recovery of vial contents.

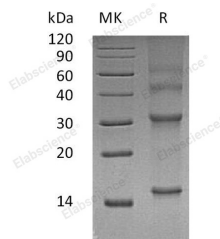
Description

Synonyms	Ubiquitin-conjugating enzyme E2 D3;Ubiquitin carrier protein D3;Ubiquitin-conjugating enzyme E2(17)KB 3;Ubiquitin-conjugating enzyme E2-17 kDa 3;Ubiquitin-protein ligase D3;UBE2D3 and UBCH5C.
Species	Human
Expression Host	E.coli
Sequence	Met 1-Met 147
Accession	AAH66917
Calculated Molecular Weight	16.6 kDa
Observed molecular weight	15 kDa
Tag	None

Properties

Purity	> 95 % as determined by reducing SDS-PAGE.
Endotoxin	< 1.0 EU per µg of the protein as determined by the LAL method.
Storage	Store at < -20°C, stable for 6 months. Please minimize freeze-thaw cycles.
Shipping	This product is provided as liquid. It is shipped at frozen temperature with blue ice/gel packs. Upon receipt, store it immediately at < - 20°C.
Formulation	Supplied as a 0.2 µm filtered solution of 20mM Tris-HCl, 8% Sucrose, 150mM NaCl, 50% Glycerol, 0.05% Tween 80, 1mM TCEP, pH7.1.
Reconstitution	Not Applicable

Data



> 95 % as determined by reducing SDS-PAGE.

Background

UBE2D3 is an enzyme that belongs to the ubiquitin-conjugating enzyme family. Ubiquitination involves at least three classes of enzymes: ubiquitin-activating enzymes, or E1s, ubiquitin-conjugating enzymes, or E2s, and ubiquitin-protein ligases, or E3s. This enzyme functions in the ubiquitination of the tumor-suppressor protein p53, which is induced by an E3 ubiquitin-protein ligase.

For Research Use Only

A Reliable Research Partner in Life Science and Medicine

Toll-free: 1-888-852-8623

Web: www.elabscience.com

Tel: 1-832-243-6086

Email: techsupport@elabscience.com

Fax: 1-832-243-6017