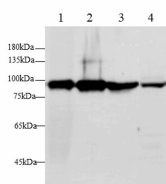


GS Polyclonal Antibody

catalog number: E-AB-40658

Note: Centrifuge before opening to ensure complete recovery of vial contents.

Description	
Reactivity	Human
Immunogen	Recombinant Human GS protein expressed by E.coli
Host	Rabbit
Isotype	IgG
Purification	Antigen Affinity Purification
Conjugation	Unconjugated
Buffer	PBS with 0.05% Proclin300, 1% protective protein and 50% glycerol, pH7.4
Applications	Recommended Dilution
WB	1:250-1:500
Data	



Western blot with GS Polyclonal antibody at dilution of 1:500. lane 1: Human Plasma, lane 2: THP-1 whole cell lysate, lane 3: MCF-7 whole cell lysate, lane 4: A431 whole cell lysate

Observed-MW: 81/86 kDa

Calculated-MW: 86 kDa

Preparation & Storage	
Storage	Store at -20°C Valid for 12 months. Avoid freeze / thaw cycles.
Shipping	The product is shipped with ice pack, upon receipt, store it immediately at the temperature recommended.
Background	

Calcium-regulated, actin-modulating protein that binds to the plus (or barbed) ends of actin monomers or filaments, preventing monomer exchange (end-blocking or capping). It can promote the assembly of monomers into filaments (nucleation) as well as sever filaments already formed. Plays a role in ciliogenesis.