

Recombinant Synuclein-α Monoclonal Antibody

catalog number: **AN300624L**

Note: Centrifuge before opening to ensure complete recovery of vial contents.

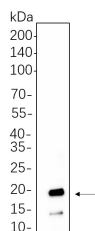
Description

| | |
|---------------------|---|
| Reactivity | Human;Mouse;Rat |
| Immunogen | Recombinant Human Synuclein-α protein |
| Host | Rabbit |
| Isotype | IgG,κ |
| Clone | 5A11 |
| Purification | Protein A |
| Buffer | PBS, 50% glycerol, 0.05% Proclin 300, 0.05% protein protectant. |

Applications Recommended Dilution

| | |
|-----------|----------------|
| WB | 1:2000-1:10000 |
|-----------|----------------|

Data



Western Blot with Recombinant Synuclein-α Monoclonal Antibody at dilution of 1:1000 dilution. Lane A: HeLa cell lysate.

Observed-MW:18 kDa

Calculated-MW:14 kDa

Preparation & Storage

| | |
|-----------------|---|
| Storage | Store at -20°C Valid for 12 months. Avoid freeze / thaw cycles. |
| Shipping | Ice bag |

Background

Alpha-synuclein is a member of the synuclein family, which also includes beta- and gamma-synuclein. Synucleins are abundantly expressed in the brain and alpha- and beta-synuclein inhibit phospholipase D2 selectively. SNCA may serve to integrate presynaptic signaling and membrane trafficking. Defects in SNCA have been implicated in the pathogenesis of Parkinson's disease. SNCA peptides are a major component of amyloid plaques in the brains of patients with Alzheimer's disease. Alternatively spliced transcripts encoding different isoforms have been identified for this gene.

For Research Use Only