

CXCL2/GRO beta Polyclonal Antibody

catalog number: AN005990L

Note: Centrifuge before opening to ensure complete recovery of vial contents.

Description

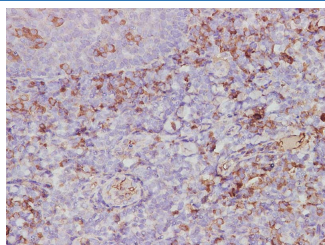
Reactivity	Human
Immunogen	Recombinant Rat CXCL2/GRO beta protein expressed by E.coli
Host	Rabbit
Isotype	IgG
Purification	Antigen Affinity Purification
Conjugation	Unconjugated
Buffer	PBS with 0.05% proclin 300, 1% protective protein and 50% glycerol, pH7.4

Applications

Recommended Dilution

IHC	1:100-1:200
------------	-------------

Data



Immunohistochemistry of paraffin-embedded Human tonsil using CXCL2/GRO beta Polyclonal Antibody at dilution of 1:750.

Preparation & Storage

Storage	Store at -20°C Valid for 12 months. Avoid freeze / thaw cycles.
Shipping	The product is shipped with ice pack, upon receipt, store it immediately at the temperature recommended.

Background

CXCL2 (C-X-C Motif Chemokine Ligand 2) is a Protein Coding gene. Diseases associated with CXCL2 include Pneumonia and Nephrogenic Systemic Fibrosis. Among its related pathways are MIF Mediated Glucocorticoid Regulation and GPCR downstream signalling. Gene Ontology (GO) annotations related to this gene include chemokine activity and CXCR chemokine receptor binding. An important paralog of this gene is CXCL1.