

Recombinant Mouse CHL-1 Protein (Fc Tag)

Catalog Number: PKSM040333

Note: *Centrifuge before opening to ensure complete recovery of vial contents.*

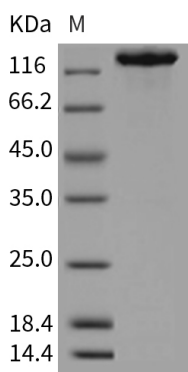
Description

Species	Mouse
Source	HEK293 Cells-derived Mouse CHL-1 protein Met1-Gln1027, with an C-terminal hFc
Calculated MW	139.4 kDa
Observed MW	140 kDa
Accession	P70232
Bio-activity	Not validated for activity

Properties

Purity	> 95 % as determined by reducing SDS-PAGE.
Endotoxin	< 1.0 EU per µg of the protein as determined by the LAL method.
Storage	Generally, lyophilized proteins are stable for up to 12 months when stored at -20 to -80°C. Reconstituted protein solution can be stored at 4-8°C for 2-7 days. Aliquots of reconstituted samples are stable at < -20°C for 3 months.
Shipping	This product is provided as lyophilized powder which is shipped with ice packs.
Formulation	Lyophilized from sterile PBS, pH 7.4 Normally 5% - 8% trehalose, mannitol and 0.01% Tween 80 are added as protectants before lyophilization. Please refer to the specific buffer information in the printed manual.
Reconstitution	Please refer to the printed manual for detailed information.

Data



> 95 % as determined by reducing SDS-PAGE.

Background

Neural cell adhesion molecule L1-like protein, also known as close homolog of L1 (CHL1) is the prototypic member of the CTF / NF-1 family of transcription factors that serve as a novel calcium signaling pathway-responsive transcription factor and is considered as a member of the largest ctf complementation group, consisting of 30 of 126 ctf mutants isolated. CHL1 is a cell adhesion molecule highly related to L1. It contains structure plan of six extracellular C2-type immunoglobulin (Ig) domains followed by five fibronectin type III domains linked by a single membrane-spanning region to a short cytoplasmic domain. The extracellular portion of CHL1 is highly glycosylated and involved them in hemophilic disease.

For Research Use Only

Toll-free: 1-888-852-8623
Web: www.elabscience.com

Tel: 1-832-243-6086
Email: techsupport@elabscience.com

Fax: 1-832-243-6017