

PDCL2 Polyclonal Antibody

catalog number: E-AB-18954

Note: Centrifuge before opening to ensure complete recovery of vial contents.

Description

| | |
|--------------|--|
| Reactivity | Human;Mouse |
| Immunogen | Fusion protein of human PDCL2 |
| Host | Rabbit |
| Isotype | IgG |
| Purification | Antigen affinity purification |
| Conjugation | Unconjugated |
| Buffer | Phosphate buffered solution, pH 7.4, containing 0.05% stabilizer and 50% glycerol. |

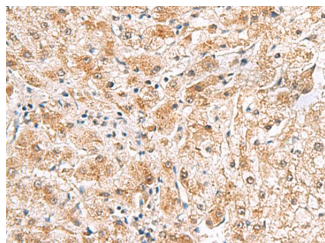
Applications

Recommended Dilution

IHC

1:50-1:300

Data



Immunohistochemistry of paraffin-embedded Human liver cancer tissue using PDCL2 Polyclonal Antibody at dilution of 1:65(×200)

Preparation & Storage

| | |
|----------|--|
| Storage | Store at -20°C Valid for 12 months. Avoid freeze / thaw cycles. |
| Shipping | The product is shipped with ice pack, upon receipt, store it immediately at the temperature recommended. |

Background

This gene encodes a member of the phosducin-like protein family and is a putative modulator of heterotrimeric G proteins. The protein shares extensive amino acid sequence homology with phosducin. Members of the phosducin-like protein family have been shown to bind to the beta-gamma subunits of G proteins.