

## SERPINB11 Polyclonal Antibody

**catalog number: E-AB-17028**

**Note:** Centrifuge before opening to ensure complete recovery of vial contents.

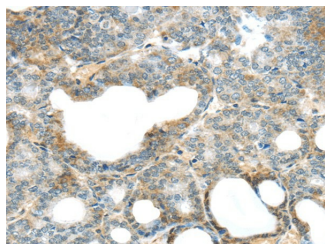
### Description

<b>Reactivity</b>	Human;Mouse
<b>Immunogen</b>	Fusion protein of human SERPINB11
<b>Host</b>	Rabbit
<b>Isotype</b>	IgG
<b>Purification</b>	Affinity purification
<b>Buffer</b>	Phosphate buffered solution, pH 7.4, containing 0.05% stabilizer and 50% glycerol.

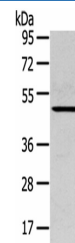
### Applications

Applications	Recommended Dilution
<b>WB</b>	1:500-2000
<b>IHC</b>	1:10-50

### Data



Immunohistochemistry of paraffin-embedded Human thyroid cancer using SERPINB11 Polyclonal Antibody at dilution of 1/20



Western Blot analysis of Mouse lung tissue using SERPINB11 Polyclonal Antibody at dilution of 1/400  
**Calculated-MW:44 kDa**

### Preparation & Storage

<b>Storage</b>	Store at -20°C Valid for 12 months. Avoid freeze / thaw cycles.
<b>Shipping</b>	The product is shipped with ice pack, upon receipt, store it immediately at the temperature recommended.

### Background

SerpinB11 (serpin peptidase inhibitor, clade B (ovalbumin), member 11), also known as EPIPIN or SERPIN11, is a 392 amino acid cytoplasmic protein that belongs to the Ov-serpin subfamily and serpin family. Like other members of the serpin family, SerpinB11 has been identified as a noninhibitory intracellular protein. The gene encoding SerpinB11 maps to human chromosome 18, which houses over 300 protein-coding genes and contains nearly 76 million bases. There are a variety of diseases associated with defects in chromosome 18-localized genes, some of which include Trisomy 18 (also known as Edwards syndrome), Niemann-Pick disease, hereditary hemorrhagic telangiectasia, erythropoietic protoporphyria and follicular lymphomas.

### For Research Use Only