

TLX1 Polyclonal Antibody

catalog number: **E-AB-64355**

Note: Centrifuge before opening to ensure complete recovery of vial contents.

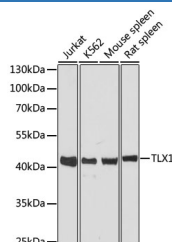
Description

| | |
|---------------------|--|
| Reactivity | Human;Mouse;Rat |
| Immunogen | Recombinant fusion protein of human TLX1 (NP_001182446.1). |
| Host | Rabbit |
| Isotype | IgG |
| Purification | Affinity purification |
| Buffer | Phosphate buffered solution, pH 7.4, containing 0.05% stabilizer and 50% glycerol. |

Applications Recommended Dilution

| | |
|-----------|---------------|
| WB | 1:1000-1:2000 |
|-----------|---------------|

Data



Western blot analysis of extracts of various cell lines using TLX1 Polyclonal Antibody at dilution of 1:3000.

Observed-MW:40 kDa

Calculated-MW:26 kDa/34 kDa

Preparation & Storage

| | |
|-----------------|--|
| Storage | Store at -20°C Valid for 12 months. Avoid freeze / thaw cycles. |
| Shipping | The product is shipped with ice pack, upon receipt, store it immediately at the temperature recommended. |

Background

This gene encodes a nuclear transcription factor that belongs to the NK-linked or NK-like (NKL) subfamily of homeobox genes. The encoded protein is required for normal development of the spleen during embryogenesis. This protein is also involved in specification of neuronal cell fates. Ectopic expression of this gene due to chromosomal translocations is associated with certain T-cell acute lymphoblastic leukemias. Alternate splicing results in multiple transcript variants.

For Research Use Only