

Recombinant Human LY6H Protein (His Tag)

Catalog Number: PKSH032715

Note: *Centrifuge before opening to ensure complete recovery of vial contents.*

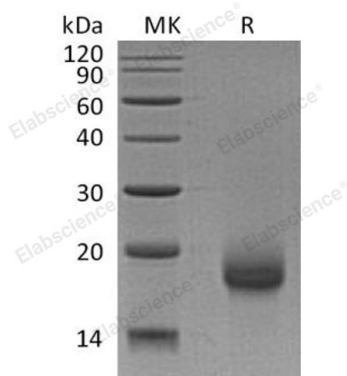
Description

Species	Human
Source	HEK293 Cells-derived Human LY6H protein Leu26-Gly115, with an C-terminal His
Calculated MW	10.9 kDa
Observed MW	18 kDa
Accession	O94772
Bio-activity	Not validated for activity

Properties

Purity	> 95 % as determined by reducing SDS-PAGE.
Endotoxin	< 1.0 EU per µg of the protein as determined by the LAL method.
Storage	Generally, lyophilized proteins are stable for up to 12 months when stored at -20 to -80°C. Reconstituted protein solution can be stored at 4-8°C for 2-7 days. Aliquots of reconstituted samples are stable at < -20°C for 3 months.
Shipping	This product is provided as lyophilized powder which is shipped with ice packs.
Formulation	Lyophilized from a 0.2 µm filtered solution of 20mM PB,150mM NaCl,pH7.4. Normally 5% - 8% trehalose, mannitol and 0.01% Tween 80 are added as protectants before lyophilization.
Reconstitution	Please refer to the specific buffer information in the printed manual. Please refer to the printed manual for detailed information.

Data



> 95 % as determined by reducing SDS-PAGE.

Background

Lymphocyte Antigen 6H (LY6H) is a novel member of the LY6 family of glycosylphosphatidylinositol-anchored cell surface glycoproteins. LY6H contains one UPAR/Ly6 domain. Human LY6H is synthesized as a 140 amino acid precursor that contains a 25 amino acid signal sequence, 20 amino acid propeptide that is removed in the mature form, and a 90 amino acid mature chain. LY6H is highly expressed in the brain (cerebral cortex, amygdala, hippocampus and subthalamic nucleus) and in acute human leukemic cell line MOLT-3. It is also found in lower levels in testis, pancreas, small intestine and colon. It has been shown that LY6H may play a role in both the central nervous system and the immune system.

For Research Use Only

Toll-free: 1-888-852-8623
Web: www.elabscience.com

Tel: 1-832-243-6086
Email: techsupport@elabscience.com

Fax: 1-832-243-6017