

TPT1 Polyclonal Antibody

catalog number: E-AB-18294

Note: Centrifuge before opening to ensure complete recovery of vial contents.

Description

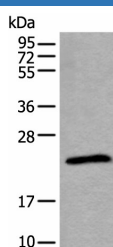
Reactivity	Human;Mouse;Rat
Immunogen	Full length fusion protein
Host	Rabbit
Isotype	IgG
Purification	Antigen affinity purification
Conjugation	Unconjugated
buffer	Phosphate buffered solution, pH 7.4, containing 0.05% stabilizer and 50% glycerol.

Applications

Recommended Dilution

WB	1:1000-1:5000
IHC	1:45-1:300

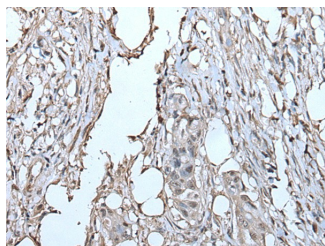
Data



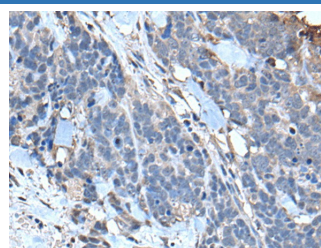
Western blot analysis of Jurkat cell lysate using TPT1 Polyclonal Antibody at dilution of 1:800

Observed-MV: Refer to figures

Calculated-MV: 20 kDa



Immunohistochemistry of paraffin-embedded Human colorectal cancer tissue using TPT1 Polyclonal Antibody at dilution of 1:85 (x200)



Immunohistochemistry of paraffin-embedded Human thyroid cancer tissue using TPT1 Polyclonal Antibody at dilution of 1:85 (x200)

Preparation & Storage

Storage	Store at -20°C Valid for 12 months. Avoid freeze / thaw cycles.
Shipping	The product is shipped with ice pack, upon receipt, store it immediately at the temperature recommended.

Background

For Research Use Only

TPT1 Polyclonal Antibody

catalog number: E-AB-18294



This gene encodes a protein that is a regulator of cellular growth and proliferation. Its mRNA is highly structured and contains an oligopyrimidine tract (5'-TOP) in its 5' untranslated region that functions to repress its translation under quiescent conditions. The encoded protein is involved in a variety of cellular pathways, including apoptosis, protein synthesis and cell division. It binds to and stabilizes microtubules, and removal of this protein through phosphorylation is required for progression through mitotic and meiotic cell divisions. This gene is known to play a role in carcinogenesis, and is upregulated in some cancer cells. Alternative splicing results in multiple transcript variants encoding different isoforms.

For Research Use Only

A Reliable Research Partner in Life Science and Medicine
Tel: 400-999-2100

Email: techsupport@elabscience.cn

Web: www.elabscience.cn

Rev. V1.7