

GPR55 Polyclonal Antibody

catalog number: E-AB-17848

Note: Centrifuge before opening to ensure complete recovery of vial contents.

Description

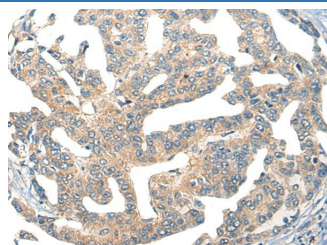
| | |
|---------------------|--|
| Reactivity | Human |
| Immunogen | Synthetic peptide of human GPR55 |
| Host | Rabbit |
| Isotype | IgG |
| Purification | Antigen affinity purification |
| Conjugation | Unconjugated |
| buffer | Phosphate buffered solution, pH 7.4, containing 0.05% stabilizer and 50% glycerol. |

Applications

Recommended Dilution

| | |
|------------|------------|
| IHC | 1:40-1:200 |
|------------|------------|

Data



Immunohistochemistry of paraffin-embedded Human liver cancer tissue using GPR55 Polyclonal Antibody at dilution of 1:55($\times 200$)

Preparation & Storage

| | |
|-----------------|--|
| Storage | Store at -20°C Valid for 12 months. Avoid freeze / thaw cycles. |
| Shipping | The product is shipped with ice pack, upon receipt, store it immediately at the temperature recommended. |

Background

This gene belongs to the G-protein-coupled receptor superfamily. The encoded integral membrane protein is a likely cannabinoid receptor. It may be involved in several physiological and pathological processes by activating a variety of signal transduction pathways.

For Research Use Only