

Elab Fluor® 488 Anti-Mouse CD103 Antibody[M290]

Catalog Number: E-AB-F1090UL

Note: Centrifuge before opening to ensure complete recovery of vial contents.

Description

| | |
|-------------------------|---|
| Reactivity | Mouse |
| Host | Rat |
| Isotype | Rat IgG2a, κ |
| Clone No. | M290 |
| Isotype Control | Elab Fluor® 488 Rat IgG2a, κ Isotype Control[2A3] [Product E-AB-F09833L] |
| Conjugation | Elab Fluor® 488 |
| Conjugation Information | Elab Fluor® 488 is designed to be excited by the Blue laser (488 nm) and detected using an optical filter centered near 520 nm (e.g., a 525/40 nm bandpass filter). |
| Storage Buffer | Phosphate buffered solution, pH 7.2, containing 0.09% sodium azide and 1% BSA. |

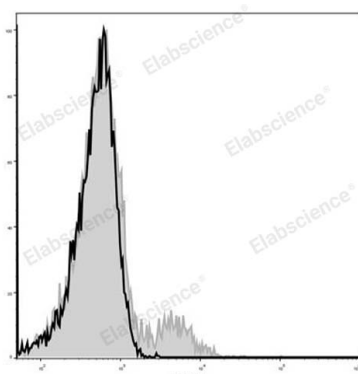
Applications

Recommended usage

FCM

Each lot of this antibody is quality control tested by flow cytometric analysis. Please check your vial before the experiment. Since applications vary, the appropriate dilutions must be determined for individual use. We suggest each investigator should titrate the reagent to obtain optimal results [The recommended concentration is 0.1-1 µg/10⁶ cells in 100 µL volume].

Data



C57BL/6 murine splenocytes are stained with Elab Fluor® 488 Anti-Mouse CD103 Antibody (filled gray histogram).

Unstained splenocytes (empty black histogram) are used as control.

Preparation & Storage

| | |
|----------|---|
| Storage | Keep as concentrated solution. This product can be stored at 2-8°C for 12 months. Please protected from prolonged exposure to light and do not freeze. |
| Shipping | Ice bag |

Antigen Information

| | |
|-----------------|--|
| Alternate Names | CD103;Integrin alpha M290;Integrin alpha-E;Itgae |
| Uniprot ID | Q60677 |
| Gene ID | 16407 |

For Research Use Only

Background

CD103 is a type I transmembrane glycoprotein known as α E integrin or Integrin α IEL chain. It belongs to the integrin family and is primarily found on intestinal intraepithelial lymphocytes (IEL). CD103 is also expressed on a subpopulation of lamina propria T cells, epithelial dendritic cells, lamina propria-derived dendritic cells, and a small subset of peripheral lymphocytes. T regulatory cells express high level of CD103. The CD103 expression on lymphocytes can be induced upon activation and TGF- β stimulation. In association with integrin β 7, CD103 is expressed as α E/ β 7 heterodimer. Mature CD103 protein can be cleaved into 2 chains, a 150 kD (C-terminal) chain and a 25 kD (N-terminal) chain, which remain linked by disulfide bonds. CD103 binds to E-cadherin and mediates homing of lymphocytes to the intestinal epithelium.